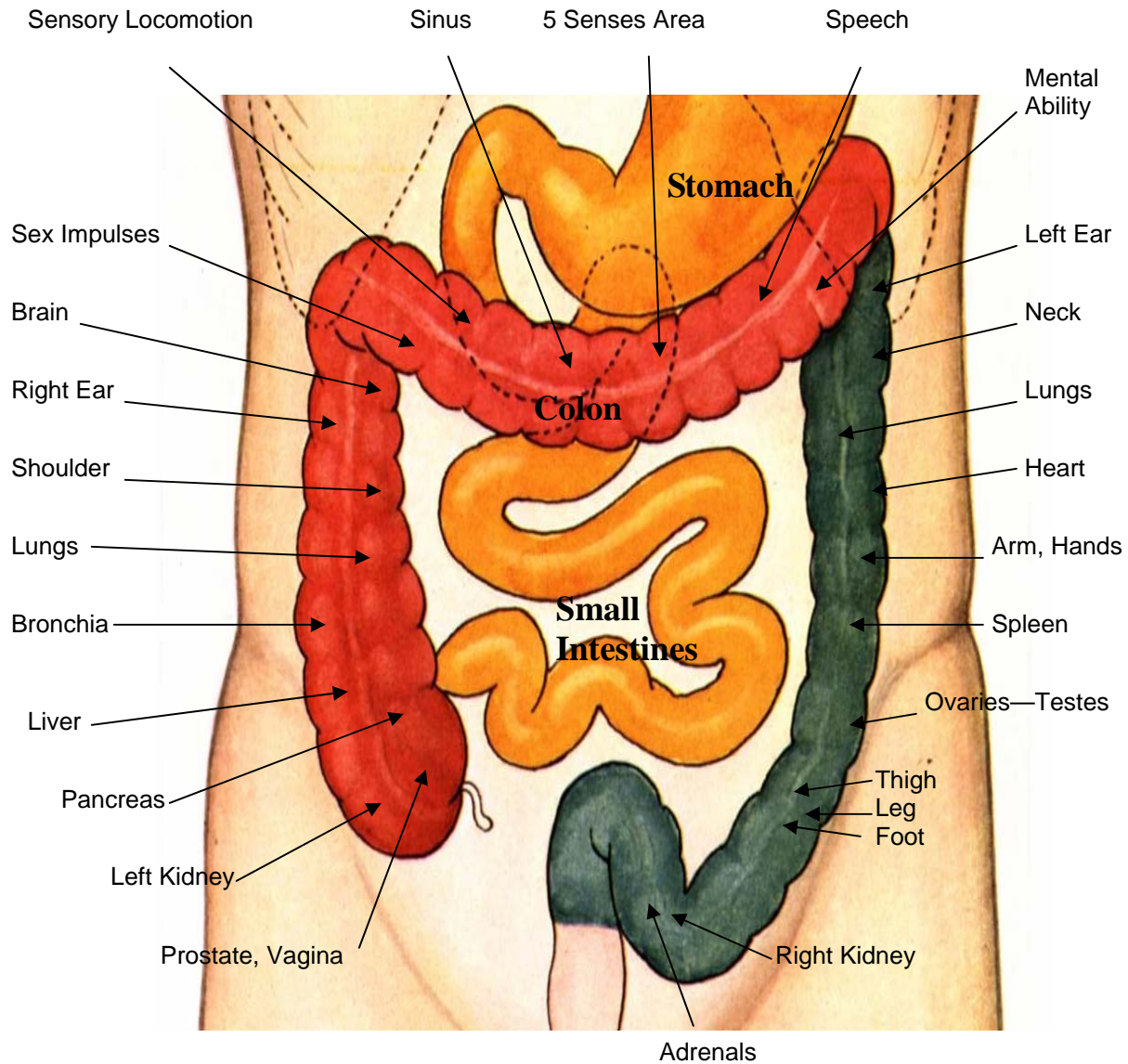


Raphaology Medicine

CORRESPONDING COLON POINTS



When any part of the colon, or its bowel pocket, becomes imbalanced in pH (acidity or alkalinity) or flora and fauna (friendly bacteria or un-friendly bacteria), or is dehydrated, or loses peristalsis, or infested with parasites, or is impacted with stored, rancid food will attack the nerve that is attachment to an organ that corresponds with that part of colon. That corresponding organ will become weakened, dysfunctional, develop allergies, susceptible to dis-ease, or be over stimulated and stressed. Colon cleansing becomes the most vitally restoring aspect to healing.