

Rain Forest Treasures



Healing Products from Nature's Prime Sources

[Home](#)

[About Us](#)

[Product List](#)

[Service List](#)

[Project List](#)

[Related Links](#)

[Product List](#)

[Product List](#)

[How To Take Herbs](#)

[Home](#)



Rain Forrest Treasures Inc.

53 Barrack Road, Belize City, Belize
Central America

Our mission is to provide herbal products with healing capacities that carry a superior standard far surpassing any formal regulations that monitor the mere recommended daily allowance. With modesty, we hold our botanical product performances to the wondrous standard of nature herself. The truly natural medicines provided by the Creator assist us in triumphantly answering the demand for excellence from humanity who deserve nothing less than peak performance.

In keeping with the model of our honorable ancestors; simplicity, purity, and integrity, we offer you our time tested, carefully perfected, hand made, indigenously crafted medicinal quality herbal supplements. They are the bottled treasures of nature that preserve the natural wonders of our earth mother's healing plants.

Our botanical supplements and herbal body care products are thoroughly researched, sourced, and selected from rain forest wet lands, local agricultural farms, and family worked contingencies around the world. We only use fair trade, organic, wild crafted, and hand collected botanicals that suit the highest level of expectation, and provide exceptional properties for healing.

We hope you will find unsurpassed satisfaction and superior performance in the quality of our expertly hand made herbal goods.

Our individual bodies are automatic, self-regulating, health seeking, organic mechanisms designed to function in a state of perfect health. In fact, without any effort on our part, our bodies will automatically maintain themselves at the most peak level of health which it is capable under the circumstances of existence we create in our lives. However, if we have joined the "everybody else is doing it, so it must be alright" club of thinking; putting dead and artificial foods into our bodies, drinking every kind of fluid except what the body really needs (water), and accepting drugs (food and pharmaceutical grades), pesticides, and environmental pollutants to become part of our lives, we have just severely complicated this simple process by block-



cides, and environmental pollutants to become part of our lives, we have just severely complicated this simple process by blocking, shocking, damaging, and debilitating the body from doing what it was designed for. Herbs are the ONLY true healing power that possess the ability to repair damage done to any body organ or process, and restore Creator given abilities to the human body; the ability to heal and experience joy.

Herbs are phyto-medicines, but not all herbs are alike. Some herbs repair damage to the tissues of the body, some herbs reduce swelling or bloating, some relieve cramps and spasms, some pH balance, some provide vitamins and minerals, some herbs kill parasites, and the list goes on. Indigenous healers have retained the “secrets” to herbal medicines by handing down the knowledge and practice of each herb’s specific use for thousands of years. Patient and loving, modern workers, such as Jonathan: Thunder: Wolf–D.R.M, Hulda Regeher Clark Ph.D., N.D., Hannah Kroeger, and others have revitalized both ancient and modern indigenous methods and practices of true phyto-medicine (plant healing) and now make it available for everyone’s use.

Thank you for giving us this opportunity to present our finely crafted herbal products for your consideration and well being.

Thank you for supporting Rain Forest Treasures. We work to facilitate and maintain rain forest propagation and continued growth, valued for rain forest’s ability to produce pure oxygen for the elimination of air pollution. Your contributions for this humanitarian project also go to help support indigenous peoples and their choice to remain living without the intervention of foreign government oversight.

A sampling of Peak Frequency Plant Therapy products:

- **Green** labels with park setting pictures are Vitamins and Minerals
- **Rainbow** labels with suns are Light Center Formulas
- **Green** labels with runners are single herbs
- **Red** labels are Acute Formulas
- **Blue** labels are Relief Formulas
- **Violet** labels are Hormone Boosters
- **Orange** labels are Amino Acids and Oils
- **Forrest Green** labels are Transforming and Revitalizing Formulas
- **Turquoise** labels are New C.E.L.L. Therapy formulas
- **Hot Pink** labels are New L.I.G.H.T Therapy formulas
- **Purple** labels with mountain scenes are Colloidal Minerals

All Our Peak Frequency Plant Therapies are carefully and lovingly hand made with the most peak quality ingredients using disciplined ancient methods in modern state of the art facilities, a healing service we proudly offer for your vital health.



[Home](#) | [About Us](#) | [Product List](#) | [Service List](#) | [Project List](#) | [Related Links](#) | [Product List](#) | [Product List](#) | [Employee Detail](#)

Rain Forest Treasures



Healing Products from Nature's Prime Sources

[Home](#)

[About Us](#)

[Product List](#)

[Service List](#)

[Project List](#)

[Related Links](#)

[Product List](#)

[Product List](#)

[How To Take Herbs](#)

About Us, Our Goods, and Our Services

Rain Forest Treasures is a leader and innovator in supplying superior quality phytoceutical products called *Peak Frequency Plant Therapy* for over 15 years. Our continued growth is due to our reputation for valuing quality without compromise; each supplemental product is meticulously made by skillful hands from the highest source and quality of truly natural ingredients using proprietary indigenous methods with as noble standards as those perfected by the ancient ones.

By modern methods with many of today's commercial herb manufacturers striving to reduce efficacy and potency by standardizing and unifying production and output, *Peak Frequency Plant Therapy* has continued to produce the most effective botanical products that can be found anywhere by keeping with time honored methods. Unlike most commercially manufactured products, our herbal extracts easily and effectively penetrate the blood brain barrier, meaning they are effective in both water and oil soluble body tissues, resulting in broad spectrum healing in glands, organs, bones, muscles, brain, hair and skin alike. Their high enzymatic and nutritive components are easily picked up by circulating blood cells and carried to malnourished and damaged areas of the body where they act to repair, revitalize, restore, and maintain health.



Peak Frequency Medicinal herbs of flowers, leaves, berries, roots, seeds, and barks before being extracted into specialized formulas.

Healing knowledge of the Egyptian, Svedish, Red Man, and Inkan heritages have been passed down for centuries to us and we accept no less than in keeping vital the integrity of our ancient teachers and healers in the peak quality of every product we offer. Each of our finely crafted botanical formulas originates from the many varieties of herbs grown in rain forests, farmlands, deserts, mountains, meadow plains, and river bottoms. The perfect blend of these plant varieties makes them universally acceptable and successful with inter-national people of all races, tribes, and backgrounds. Of the many forms in which herbs can be used; capsules, teas, alcohol and vinegar based tinctures, syrups, herbal baths, suppositories, and oils we have found that all of them have their place in natural healing.

However, there is one method of preparation that is more deeply healing, provides faster and more effective results, and neutralizes more body toxins. This method is the one we use for our hand crafted products. It is the method of our ancestors; the unsurpassed process of preserving the medicinal integrity and properties contained in herbs by cold extraction in spring water and vegetable glycerin oil, nature's strongest preservative

process of medicinal integrity and properties contained in herbs by cold extraction in spring water and vegetable glycerin oil, nature's strongest preservative.

Our family of natural healers at [Rain Forest Treasures](#) extend to you our heartfelt wishes for your health, happiness, peace and joy, hoping that we may be able to support and contribute to the successful achievement of your pursuits, goals, aspirations, and health.

Rain Forest Treasures Pledge of Excellence

Products

- Superior, kosher, more than organic quality herbs and ingredients for higher enzyme and nutrient rich healing products
- Integrity of herbal property maintained in amber glass bottles for minimal light damage and maximum term storage (5 year term for full bottles)
- Provide fair trade and sustainable farming products
- Provide a full line of phytochemicals to meet a majority of health needs
- Provide reliable products and information
- No irradiated herbs
- No herbs sprayed with herbicides or pesticides
- No herbs grown in chemical soil amendments
- No GMO herbs
- Herbs wildcrafted and hand gathered from natural and virgin environment when and where ever possible
- Support sustainable agriculture in selecting raw materials
- Maintain lowest possible pricing with highest quality product

Service

- Easy ordering and no minimums
- Frequent and same day shipping to accommodate immediate needs
- Responsible and accurate information about botanical therapies included with shipment
- Friendly, enthusiastic, and knowledgeable staff
- Large stock on hand to avoid back-orders

Quality

- Thorough research goes into every product for insuring superior plant ingredients and properties to suspension fluids and assimilation.
- Thoroughly tested methods and technologies of mixing, extraction, bottling, labeling, and shipping.
- Packaging offers convenience in storage, easy dosage administration, and clear labeling.
- Exceptional quality inspection and unyielding commitment to honorable manufacturing principles.
- In-house quality control from raw materials and extracting to final goods and shipping.
- Quality and satisfaction are guaranteed by full reimbursement.

WARNING

- Always consult your doctor or health care professional before taking any supplements.
- Be informed on the herbal products you take.
- Always pay attention to warnings and contra-indications with pharmaceutical drugs and/or other supplements you may already be taking.
- Discontinue use if healing crisis occurs; indicated by frequent diarrhea, vomiting, abdominal pain, rashes, or persistent headaches.
- Detoxification and expulsion of stored/rancid compounds producing uncomfortable reactions.

- Detoxification and expulsion of stored/rancid compounds producing uncomfortable and dis-ease-like symptoms are expected with the use of high quality products in order to remove the causes of dis-ease and restore health and vitality.
- If pregnant or nursing, consult health care provider before using any food supplements.



[Home](#) | [About Us](#) | [Product List](#) | [Service List](#) | [Project List](#) | [Related Links](#) | [Product List](#) | [Product List](#) | [Employee Detail](#)

Rain Forest Treasures



Healing Products from Nature's Prime Sources

[Home](#)

[About Us](#)

[Product List](#)

[Service List](#)

[Project List](#)

[Related Links](#)

[Product List](#)

[Product List](#)

H

Peak Frequency Plant Therapy

To contact us call:
1-555-555-5555

Peak Frequency Plant Therapy is phytochemical herbal properties that work with the natural chemistry of the body to repair, balance, and stimulate specific organs, emotions, thinking capacity, energy, and endurance that will assist people in achieving their ultimate, limitless performance. Using botanical quality herbal therapies instead of synthetic chemicals will heal the body without side effects and restore complete health and natural well being!

Peak Frequency Plant Therapy



SINGLE HERB EXTRACTS A through H

Each of our single herbs carries one or more specific properties that benefit the human body as defined below. One or more single herbs may be combined to receive multiple benefits and will not produce harmful side-effects. All herbs may promote detoxification and healing.

ALFALFA



Its extremely rich root system going 30 feet deep collects many healing minerals such as calcium, potassium, phosphorus, and iron, also providing anti-inflammatory properties of copper and zinc. As the main herb to repair the gall bladder, it's also good for disorders of the bones, such as fractures, osteoporosis and arthritis pain. It has amino acid building protein, live enzymes, B-complex vitamins, and enough fiber to lower cholesterol. It's great for the liver and general detoxifying.

ALOE VERA



Is best used on the outside of the body as a topical application because the gel of this plant heals skin which has been burned by radiation, fire, sun, caustic or boiling materials, it soothes bedsores and hemorrhoids, and reduces pain, swelling, rash, and abrasion. As the main ingredient in PFPT Burn Salve, combined with St. John's Wort and other ingredients make the strongest of healing when applied alternately with raw honey to repair even excessively burned skin without scarring.

AMERICAN GINSENG



Works primarily with mental and emotional stress, helps "turn off" thinking at bed time to fall asleep faster, will increase endurance, sexuality, and



ing at bed time to fall asleep faster, will increase endurance, sexuality, and stamina, stimulates elastin synthesis in skin and hair, and promotes right brain - left brain synapses for kids who have a problem with bed-wetting. As the main herb that repairs the nipple hormones, American Ginseng helps oxygen delivery to cells making this a great tonic herb for heart, lungs and inspiration.

ANGELICA/Dong Quoi



Starts normalizing and balancing testicular and ovarian hormones (particularly the shared hormone progesterone) and reduces irritability, depression, and hormone related insomnia and night sweats. Its primary energetic property is to help release *any* kind of fear from the body. Can be used with Black Currant oil, Black Cohosh, and/or Evening Primrose oil, combined with Zinc and/or Suma for menopausal symptoms.

ANISE Seed



Has properties of anti-cramping and anti-flatulence (especially with intestinal bloating), helps to release physical and emotional fears through ovaries and testes, kills bacteria, relieves mucous (especially in the sinuses and colon), reduces head lice and many other internal parasites. Has strong taste of black licorice.

BARLEY ESSENCE



Helps to absorb more minerals and vitamins from food in the small intestines and therefore reduces appetite, prevents constipation, is extremely alkalizing for any acidic conditions, reduces cholesterol and risk of cancer in small intestines, contains high amounts of calcium, phosphorus, iron, magnesium, B-vitamins, and may help support weight loss.

BLACK CURRANT oil



Best used for menopausal symptoms while repairing and restoring the ovarian hormones to balance, thus relieving the symptoms. When used with or in place of Black Cohosh, as a phyto-estrogen complementary to the female hormone, it aids irregular menstrual bleeding, painful menses, hot flashes, night sweats, and rheumatoid arthritis. (not for pregnancy)

BLUE FLAG



Stimulates the detoxification process in the kidneys, plus boosts healing effect in the whole body by accelerating hormones of ovaries and prostate, is great for asthma, relieves even the most intense coughs, and repairs damage to tonsils; as main immune organ for upper respiratory tract.

CARAWAY Seed



Used primarily to increase production of white blood cells, it's also used in our formulas to complement the properties of other herbs. Caraway seeds have a delicious full bodied taste, customarily used in breads, it helps to relieve inflammation, boost circulation, and stimulate olfactory senses (smell, taste, etc.).

CAYENNE/Capsicum



Is the main herb to repair Thyroid damage, and helps increase circulation, aids blood clotting (direct application will stop *emergency* bleeding, but it does sting), is blood cleaning while reducing platelet stickiness (clots, clumping, and restricted flow), normalizes *low* blood pressure and stops internal bleeding when taken orally.

CENTAURY



Primary repairing herb for the stomach and small intestines, is a good activator of whole digestive system, stimulates production of saliva and all gastric juices, promotes stronger appetite, from illness or picky mouths, gives

vator of whole digestive system, stimulates production of saliva and all gastric juices, promotes stronger appetite from illness or picky youths, gives you the "guts" to stand up to those you normally aren't able to, and helps heal holes and energy loss in auric field.

CHAMOMILE



Induces fever to promote sweats by removing toxins through the skin, works to relax and take away cramps as a muscle relaxant, prevents discharge of histamines as an anti-allergenic, and reduces stress: including ulcers and solar plexus pain. Its the main herb for head infections, including the brain, minimizes migraine headaches, neutralizes bacterial produced toxins, flushes uric acid through the kidneys, and very skin healing on any kind of rash.

CHOCOLATE



From the organic cocoa bean this herb stimulates the pineal gland, which in turn normalizes the hormones of every other hormone producing gland. Helps with PMS symptoms for women, and satisfies cravings by supplying mineral loss (when eaten in organic state).

COFFEE

(Papua New Guinea)



Has a unique ability as the strongest colon detoxifier to draw toxins away from any part of the body and down into the colon, then transport them out of the body by using certain alkalizing enzymes to attract acids away from directly affected areas, while reducing colon cramping. Its immense alkalizing properties make it actually good for those with stomach ulcer symptoms.

CRANBERRIES



Work with the respiratory tract by going directly to the lymph fluids and kidneys to make urine more alkaline by transporting lymphatic liquids out of lymph nodes. Keeps bacteria from sticking to the walls of kidneys and bladder and can be used in the most serious kidney diseases and bladder inflammation.

ECHINACEA (purpurea)



Works the front line immune/defense system of adenoids, tonsils, thymus, lymph nodes, appendix spleen, and bone marrow to kill bacteria and sweep debris and dead cells through lymph fluids. It stimulates the immune system by dispatching white blood cells to fight infection, and is especially good in the digestive tract for removing bacteria in diarrhea. Do not take regularly.

EVENING PRIMROSE



The oil of this plant is effective for symptoms caused by menopause, such as hot flashes, and Multiple Sclerosis such as pain, paralysis, breathing difficulty, and insomnia. These MS symptoms can be aided by daily doses of 40 drops Noni, 10 capsules Evening Primrose oil, 2,500 mg Magnesium, 4,000mg B-complex, 500mg Inositol, 400mg Choline, 4,000mg Potassium, vitamin E starting at 400IU working up to 1,800IU, 2,000 IU vitamin-C, 1 teaspoon liquid lecithin, and 1,500mg essential amino acid complex.

FENUGREEK



Is an herb to inspire creativity by stimulating both mammary and sexual hormones, helps switch left brain activity to the right side of the brain, and works as a companion with thyme to normalize blood sugar levels when coupled with guava leaf, yucca, and banaba leaf (an exotic plant).

GARCINIA cambogia



Activates all organ functions and can be combined with any other organ stimulating herbs to accelerate the healing process. It helps with weight loss in that its stimulating properties increase metabolism. When combined with Schizandra berry it is the only natural plant combination property that will restore altered genetics.

GINGER root



Is a spicy fruit root that stimulates the appetite by allowing more bile and pancreatic enzymes to flow to the small intestines. It has properties that relieve motion sickness, morning sickness, PMS, migraine headaches, and improve mental alertness. Helps ease the symptoms of ulcers, jet lag, and indigestion.

GINKGO-BILOBA



Used symptomatically to improve circulation to the head to improve memory, increase information flow to brain, and relieve ringing in the ears (tinnitus) caused from restricted blood flow. Will reduce chronic inflammation of the veins and arteries in the lower extremities, and may help improve eyesight.

GOLDEN SEAL



Used traditionally as a strong infection eliminator, especially with diarrhea, and also used in conjunction with cayenne pepper and vitamin C to cure chronic alcoholism and drug addiction. This is one herb that is not tolerated by the body for long periods of use at a time.

GOLDEN ROD



Repairs all aspects of the lymph system and its fluids to boost the complete immune system, with strong emphasis on the respiratory tract. Stimulates kidneys which supports pH balance for lymph fluids, being especially good for influenza and upper respiratory mucous relief. It is good for getting a hold of feelings of not wanting to touch or be touched.

GOTU KOLA



Powerfully normalizes the first attack point of stress: the bile duct, and stimulates mental function, including the improvement of IQ, concentration, and attention span by producing more bile and digesting nutrients more effectively. It's especially good for releasing stored up angry feelings, and coping better with anger.

HAWTHORN BERRY



Improves blood circulation in the solar plexus first and then all blood flow. It normalizes and adjusts blood pressure (whether it's high or low) to balance the individual to his/her normal, and is used in many parts of the world as acute medicine for its fast action to normalize heart/lung functions.

HAWTHORNE LEAF



One of the few plants whose different parts have different properties, the main effort of this leaf provides the tools for natural healing properties of the liver to repair itself from any diseasements. It also has a similar effect on overall blood pressure as the berries do, but first it supports blood concentration in the liver to normalize, repair, and detoxify itself.

centration in the liver to normalize, repair, and detoxify itself.

HOPS



Is very effective for helping to fall asleep, by calming the mind and thinking processes, especially if there is often waking by irregular organ function, frequent bathroom needs, or over-thinking stimulation or recycled thoughts when trying to sleep at night.

HORSERADISH



Main herb to repair spinal cord nerve damage, swelling, or interruption, and improves all nerve conditions in the body. Its properties render horseradish the strongest internal anti- bacterial agent known to the western world. It works by destroying organ based bacteria which support and promote fungal growth in the nerves.

HORSETAIL/Shavegrass



High in silica, and therefore the strongest alkalizing agent, it's good for reducing pain and infection, such as with colds and flue's as it powerfully flushes out uric acid through the kidneys, relieving their symptoms. As a beauty enhancer it strengthens hair, skin, and nails by allowing more minerals for their growth.

Rain Forest Treasures



Healing Products from Nature's Prime Sources

[Home](#)

[About Us](#)

[Product List](#)

[Service List](#)

[Project List](#)

[Related Links](#)

[Product List](#)

[Product List](#)

[How To Take Herbs](#)

Peak Frequency Plant Therapy

Offering List

To contact us call:
1-555-555-5555

Peak Frequency Plant Therapy is phytochemical herbal properties that work with the natural chemistry of the body to repair, balance, and stimulate specific organs, emotions, thinking capacity, energy, and endurance that will assist people in achieving their ultimate, limitless performance. Using botanical quality herbal therapies instead of synthetic chemicals will heal the body without side effects and restore complete health and natural well being!

Peak Frequency Plant Therapy



SINGLE HERB EXTRACTS J through Y





MYRRH gum tears



Works with thyroid to repair eyes and olfactory. Strongly anti-*viral* in nature (with anti-fungal properties as well), it is an excellent immune booster (i.e. AIDS sufferers) and cleans up most infections in the mouth; gum diseases, abscesses, and tooth aches. Especially good for Thrush (oral yeast infection) and Candida, it has anti-cramping properties, as in menstrual cramps, and can be used topically for vaginal yeast infection.

NONI / Morinda Fruit



Boosts emotional stability and endurance as a main restoring agent for ovaries and testes, provides a boost to physical energy, enhances all facets of immunity, builds T-cells, kills intestinal worms, and contains natural serotonin as an anti-depressant and migraine headache reliever. Helps rebuild joints and its inflammation, and has great affect with hard core drug and alcohol addiction in removing desire without withdrawal symptoms.

PASSION FLOWER

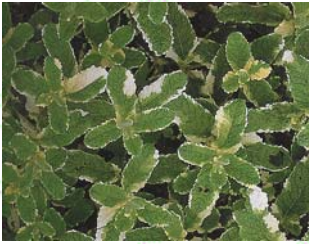


Powerfully helps the body to get hold of out of control emotions, especially if there is lack of touching involved. Its properties relax the solar plexus and repair any damage, contains sedative properties and relieves nerve



if there is lack of touching involved. Its properties relax the solar plexus and repair any damage, contains sedative properties and relieves nerve spasm disorders, helps insomnia, has anti-stressing effect with family and job.

PEPPERMINT



Dilates the blood vessels for increased circulation of the transport of white blood cells and potassium throughout the body. This process removes bacterial, viral and fungal anti-bodies and their toxins while promoting detoxification through sweating-out of lymph fluids through the skin. The result is increased the appetite, better digestive enzyme production, and reduction of headaches.

RED BEET



Purifies red blood cells by eliminating environmental toxins through the lymph system normalizing and arresting *bacterial* and *tumorous* growth. Repairs taste buds, which are a direct link to the liver and its detoxification. Taken with iron will allow better utilization of both their properties.

RED CLOVER



Boosts entire process of potassium absorption into the bones through allowing the body to let go of negative and traumatic emotions, helping B-cell to develop, thereby releasing nutrients that help fight cellular mutations such as cancer, AIDS, and other immune disorders.

RED RASPBERRY Lf.



Repairs appendix damage and builds white blood cells. It also protects the digestive tract and keeps it from absorbing toxins by making mucous membranes and tissues stronger, while healing them. It is used additionally to strengthen all muscle organs, such as heart, lungs, colon, stomach, and especially prepares uterus for childbirth.

ROSEMARY



The oil and leaf of this plant is especially stimulating for the thyroid and all its functions. It boosts all circulation in the body and is a nerve stimulant. Externally used it will ease muscle pain, sciatica, and neuralgia. A drop of essential oil under the tongue relieves nausea and headache.

SAGE



An excellent emergency blood purifier, such as toxic shock, it also helps the kidneys by stimulating sweats when drunk as a tea during bathing. It's traditionally dried, bundled, and tied then burned as a smudge to clear the air of toxins as well as bad spirits.

SARSPARILLA rt.



Super antidote for food poisoning and snake bite. It stimulates adrenal part of the kidneys to powerfully neutralize toxins in the blood stream and it has the ability to repair both kidney and adrenal damage. It will remove symptoms of syphilis, hives, rash, and acne. It is an overall physical strengthener, alertness booster, sweats inducer, diuretic, and has natural properties like testosterone (anabolic steroid) that works to build muscles, and rejuvenates male sexuality.

SCHISANDRA berry



Boosts the circulation of entire body by helping potassium to be absorbed

SCHISANDRA berry



Boosts the circulation of entire body by helping potassium to be absorbed into the organs. When combined with Garcinia it is the only team that will restore altered or mutated genetics, will repair tissue damaged by antibodies, is especially good for any illness where weakness has been introduced as it strengthens all system's functions, and accelerates light absorbing processes of body.

SLIPPERY ELM



As natural mucilage it lubricates and builds joints, muscles, and sockets, produces mucous in the colon to relieve bowel problems, pounded leaf poultices extract thorns and bullets alike while healing the wound, teas make strong medicine for ulcers and colitis, bolus preparation is the base of other herbal suppository activity.

SUMA

Primary herb for repairing inner ear and equilibrium damage, relieving tinnitus and restoring mastoid health. It works on inflammation caused by bacterial activity anywhere in the body. It is especially effective in normalizing irregularities for the uterus, ovaries, testes, and prostate by way of the pineal.

TEA TREE oil



The essential oil of this Australian tree is one of the strongest antiseptics in nature as shown when applied to carbuncles and pus-filled infections that dissolves pus and inhibits bacterial growth without damaging the tissue surrounding it, even in the mouth. It is also a topical therapy for parasitic skin diseases, is astringent and anesthetic, deodorant, and cleanser for wounds, stops Candida, heals fungal infections, ringworm and sore throats when gargled or topically applied.

THYME



Powerful repairing and restoring agent for the pancreas (pancreatitis, diabetes, etc.), and can be used internally and externally as one of the strongest anti-bacterial agents in nature. Internally thyme is a strong detoxifier for digestive and respiratory infections, asthma, whooping cough, tonsillitis, stimulates digestion, gives physical energy, and helps to prevent viruses from taking hold.

WHITE WILLOW bark



Was the original Bayer aspirin. It's effective in taking away pain in the joints and head, and reduces swelling, rheumatism, and fevers. It boosts all skin functions, is a natural blood thinner (replaces aspirin) without damaging the stomach, and the main herb for restoring skin health and healing working through the kidneys.

YAM wild



A natural plant hormone (phyto-estrogen) complementary to those produced by the human body that can be taken internally or by topical applications. Especially effective to supplement or to enhance the female body's hormones, particularly balancing to estrogen production and progesterone levels.

WITCH HAZEL



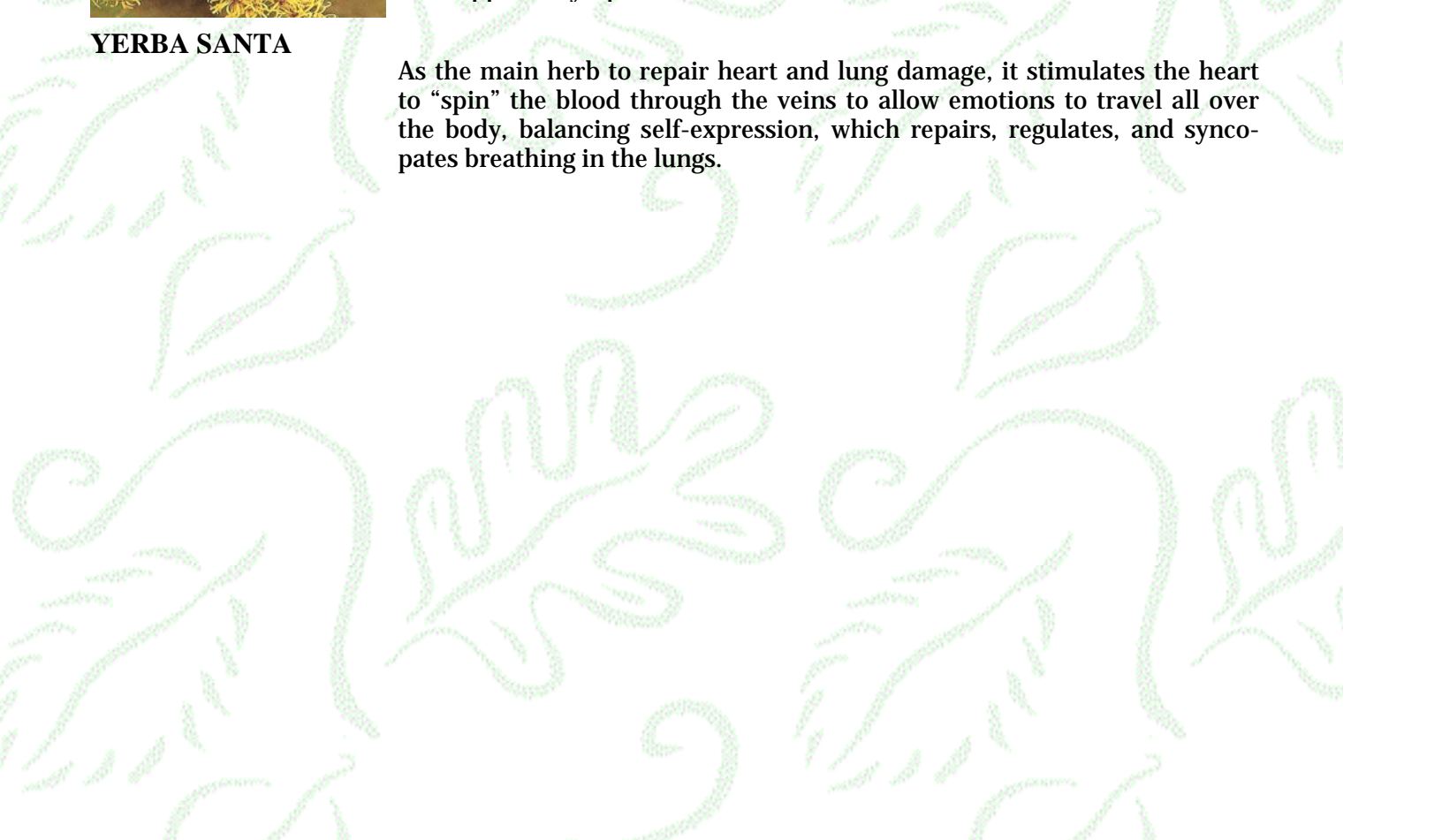
A natural skin astringent, working through the spleen to provide properties that repair spleen damage and restore its function. Witch hazel can be used internally and externally to normalize bleeding, such as hemorrhoids, bruises, inflamed swelling, varicose veins, all by stimulating the spleen to direct white blood cell lymphocytes to the affected location to remove toxins trapped in lymphatic fluids.

YERRA SANTA



YERBA SANTA

As the main herb to repair heart and lung damage, it stimulates the heart to “spin” the blood through the veins to allow emotions to travel all over the body, balancing self-expression, which repairs, regulates, and syncopates breathing in the lungs.



Rain Forest Treasures



Healing Products from Nature's Prime Sources

[Home](#)

[About Us](#)

[Product List](#)

[Service List](#)

[Project List](#)

[Related Links](#)

[Product List](#)

[Product List](#)

[How To Take Herbs](#)

To place an order:
Print out order form, fill in, and
mail to

Peak Frequency Plant Therapy

Offering List

Peak Frequency Plant Therapy is phytochemical herbal properties that work with the natural chemistry of the body to repair, balance, and stimulate specific organs, emotions, thinking capacity, energy, and endurance that will assist people in achieving their ultimate, limitless performance. Using botanical quality herbal therapies instead of synthetic chemicals will heal the body without side effects and restore complete health and natural well being!

Peak Frequency Plant Therapy



Vitamins & Minerals

B-COMPLEX / POTASSIUM

All dis-ease symptoms are B-complex vitamins **and** Potassium deficiency. All other vitamins and herbs are to repair damage, and restore and maintain function. Emotional, mental, physical, environmental, pharmaceutical, and household chemical pollutants cause *STRESS* which depletes B-vitamins and Potassium reserve (both co-dependent). Digestion cannot occur without B vitamins, especially B12, and nausea & morning sickness are lack of B6.

This product is kosher, Candida free, live saccharomyces cerevisiae yeast grown on blackstrap molasses and boosted with vegetable glycerin oil.

B-COMPLEX / POTASSIUM

Same effect as above, but this B-complex and Potassium is extracted in natural alcohol especially for those who have over stimulated or disabled pancreas ducts or pancreatic problems such as pancreatitis, hypoglycemia, or diabetic symptoms.

Alcohol Extract

GRASS-C / VITAMIN C



Vitamin-C extracted from Lemon Grass releases physical electricity patterns trapped in tissues that cause habits and addictions, and dissipates environmental toxins, while repairing blood vessel damage and rebuilding the tissue of organs and membranes. Vitamin C regulates the collagen in building skin tissues cells and exists in all fruits, but especially berries.

the tissue of organs and membranes. Vitamin C regulates the collagen in building skin tissues cells and exists in all fruits, but especially berries.

RICE-E / VITAMIN E



Extracted from organic brown Basmati rice it repairs damaged nerve tissues and restores brain magnetics for receiving and transmitting coordination of all body functions, especially all hormone system functions. Vitamin E can break up blood clots without causing them to break loose.

SUPER MINERALS



This combination of Kelp (sea minerals), Alfalfa (soil minerals), and Red Flame Grapes (plant minerals) serves three missions as the building and restoring material for all organs, bones, and light absorbing abilities of the body by allowing old synthetic toxins to be replaced with peak light crystals of minerals. All diseases are a mineral deficiency, and these minerals are the most easily absorbed and assimilated to neutralize acidity and toxicity, restore function, and maintain health.

KELP – IODINE



Fresh sea kelp is rich in natural iodine, the main mineral for proper thyroid function and synthesis. It aids in vitamin E utilization, metabolic efficiency, resistance to bacterial infection, and is essential to the formation of thyroxin, which balances estrogen and testosterone levels.

NETTLES – IRON & CALCIUM



Iron from Stinging Nettles supplies the single most important bodily function element for producing hemoglobin and oxygenation of red blood cells. Iron improves anemia, chronic fatigue, and gray pallor. Disease symptoms, such as arthritis, cancer, Candidiasis, and herpes impair iron utilization by the body and need to be supplemented. Nettles are a total hormone booster by increasing production in every part of the body, and its natural anti-histamine properties helps allergy symptoms and swelling reactions produced by certain insect bites. Nettles also contains high levels of organic calcium for bones, teeth, muscles, and helping kidneys pH balance blood fluids and stomach balance hydrochloric acid.

CHARD – ZINC



One of the main minerals for kidney function, and therefore the health of skin, zinc is extracted from organic red chard, along with the compliment of other vitamins and minerals necessary for its absorption, for the perfect utilization levels of zinc for each individual body. (Will not cause nausea)

WHEAT -MAGNESIUM



A co-mineral with potassium for heart health, magnesium works with nerves to prevent tremors, seizures, paralysis, irritability, and Parkinson's disease. It is essential for bone growth and for proper bowel function and peristaltic action of waste elimination. Can be used with amino acids of PABA, Inositol, and Choline for good colon muscle action.

Amino Acids

AMINO ACID Complex
with
Japanese Chlorella

The building block of proteins, amino acids are used by the body to construct protein of cells, RNA, and DNA. Each one ounce bottle contains utilization of proportionate amounts of Lysine, Methionine, Phenylalanine, Proline, Serine, Threonine, Tryptophan, Tyrosine, Valine, Alanine, Arginine, Aspartic Acid, Cystine, Glutamic Acid, Glycine, Histidine, Isoleucine, and Leucine with 6 times multiplied potency by the addition of chlorella and a specific frequency enhancer.



LIGHT CENTER FORMULAS

GOLD Spectrum- Boosts your entire hormone system and human growth factors through the pituitary gland, governing large and small brains, and opens your mind to be able to receive more information to increase your intelligence quotient and awareness for truth.



Mind—Inyan

YELLOW Spectrum- Stimulates the pineal gland to speed up all body functions including boosting your immune system and regulating your bio-rhythms to reduce degeneration and aging, gives new perspectives and ability to focus on the future, boosts understanding of all your individual abilities, restoring new hope and reducing confusion and depression.



Focus—Chapi

GREEN Spectrum- Increase your ability to: make decisions, determine yourself, be less influenced and negatively affected by external opinion and judgment, express and profile yourself to others, and act on your own choices as your peak self through normalizing all the functions of the thyroid gland.



Self-Identity—
Chanli

BLUE Spectrum- Stimulates your circulation, helps detoxification, and aids absorption of nutrients into your organs as a good way to transport environmental toxins away from body systems through the mammary glands. This will increase your longevity and anti-aging process as good feelings are infused into circulation.



Motivation—
Wagle Shun

VIOLET Spectrum- Enhances your ability to express and receive emotions, reduce relationship stresses by opening communication channels and encourages touching and forgiveness, repairs damage to and increases kidney and adrenal function, and reduces inflammation and pain processes of your entire body.



Relations—
Yumeni

ORANGE Spectrum- Normalizes all forms of digestive and eliminative imbalances by removing all unwanted bacteria and virus, and other parasitic infections, while repairing damage in the pancreas, stomach, small intestines and colon, and restoring your individual bio-rhythms giving you a feeling of wellness and health.



Balance—Wi

ORANGE Spectrum- Works especially well with pancreatic disorders of the digestive system (i.e. hypoglycemia, pancreatitis, and diabetes) who cannot yet tolerate glycerin extracts.



Balance—*Alcohol Extract*

RED Spectrum- Strengthens your sexual hormone system; testes in males and ovaries in females, corrects female problems, revitalizes male dysfunction, and assists you in expressing your full personality by reducing fears and promoting tenderness, endurance, and creativity. It will also boost and coordinate *all* body functions.



Peace—Luta

RELIEF FORMULAS

BREATHE EASIER Formula

Dilates and opens lungs and bronchia, eases and increases breathing volume, and relieves sinus congestion, asthma, and allergies.

JOINT SUPPORT Formula

Diminishes symptoms of arthritis pain and swelling in the joints by alkalizing acid joint fluid, while repairing cartilage and bone loss damage.

CIRCULATION IMPROV

Reduces circulation of blood and fluid, and improves circulation

CIRCULATION IMPROVING

Formula

Promotes circulation of blood and lymph fluids, oxygen, and emotions in the head, body, and extremities in both acute and non-acute cases.

HEART HARMONY Formula

Restores heart beat rhythm for smoother spin of emotions through circulatory system and harmonizes heart rhythm with lungs.

MUSCLE RELAXING Formula

Eases stressed, overworked, and tight muscles for re-patterning when they have forgotten how to relax.

SLEEP DEEPER Formula

Promotes deeper, more restful sleep. Use during the day (will not cause drowsiness) so you will be relaxed and stay asleep easier during the night, and can be used with Hops at bedtime to help fall asleep easier. (At beginning of therapy, keep by bedside to take if awakened during night.)

GLUCOSE ADJUSTING Formula

Regulates and adjusts sugar levels in blood to “normal” by increasing insulin binding properties while helping nutrients to be utilized. Stabilizes and aids pancreatic function, and reduces sugar “lows” and cravings. (Not for those with hypoglycemic symptoms.)

WEIGHT LOSS Formula

Intended for those who have developed an extra liver enzyme as a result of too much stress, which has caused fatty acids to be deposited in adipose tissue instead of the liver, causing weight gain. Helps diminish appetite, reduces “sweet tooth”, and diverts stored fats out of tissue. Must be taken with lots of water and can be enhanced with supplemental daily intake of Inositol and Choline and enzymes.

Rain Forest Treasures



Healing Products from Nature's Prime Sources

[Home](#)

[About Us](#)

[Product List](#)

[Service List](#)

[Project List](#)

[Related Links](#)

[Product List](#)

[Product List](#)

[How To Take Herbs](#)

Product Detail

[< Return to Product List](#)

Peak Frequency Plant Therapy is phytochemical herbal properties that work with the natural chemistry of the body to repair, balance, and stimulate specific organs, emotions, thinking capacity, energy, and endurance that will assist people in achieving their ultimate, limitless performance. Using botanical quality herbal therapies instead of synthetic chemicals will heal the body without side effects and restore complete health and natural well being!

ACUTE FORMULAS

TRF
Trauma Reducing Formula

For pain reducing through out the entire body targeted at past emotional trauma manifesting in specific places in the body that cause discomfort, dysfunction, and dis-ease to form and take hold.

APDF
Acute Pain Diminishing Formula

Super strength natural pain reducing for all body areas: especially, head, back, and all skeletal and musculature pains. May be combined with White Willow bark for extra boost with nerve and organ pain.

TNF
Toxin Neutralization Formula

For acute cases of food poisoning, heavy metals and mercury poisoning, snake bite, insect bite, diarrhea, dysentery, etc., as it is powerfully able to neutralize and remove any toxins from the body quickly.

ABF
Anti-Bacterial Formula

Strongest anti-bacterial combination used for acute infections causing swelling, redness/inflammation, fevers, nausea, pain, etceteras, to kill and remove bacteria quickly.

AVF
Anti- Viral Formula

For use when there is pain but an absence of other symptoms, such as fever or swelling, to remove virus manifestations known as cancer, AIDS, retro- virus, herpes, and Gulf War Syndrome. May be used in combination with another acute formula or single herb on symptoms know as Anthrax.

AFF
Anti-Fungal Formula

Strongest anti-fungal combination to destroy fungal attacks on nerve pathways and fungi that travels in the lymph system. Will also transport die off of fungal toxins from lymph fluids out of the body. May be used topically on athletes' foot and hand and nail fungi.

SFF
Stress Free Formula

Diminishes stressed production of catabolic (cell destroying) steroids in kidneys and aids utilization of B-complex vitamins in pancreas for balancing pH levels in gastrointestinal tract and blood fluids, while causing stress levels in emotions and over-thinking to de-escalate

balancing pH levels in gastrointestinal tract and blood fluids, while causing stress levels in emotions and over-thinking to de-escalate.



HORMONE BOOSTERS

The effect of these bottled herb and food combinations is achieving two benefits; one, the repairing and restoring of each individual hormone gland and two, boosting the gland's functional hormonal production in both balance and activity level. These extracts are made under stringent indigenous conditions using natural crystals and molecular frequency infusions to enhance and boost each of the herb and food natural component's properties for higher absorption and utilization.

PITUITARY

Promotes increased hormone balance in the body via the master gland; pituitary, by increasing or reducing hormones as needed, improving immune system, reducing mental stress, coping with anger, and taking in more information without confusion.

PINEAL

Stimulates hormone balance in the pineal to promote better understanding and perspective, reduce eye strain, restore and facilitate focus, improve sleeping abilities, and help light and energy enter the body via the pineal thus boosting anti-aging hormones.

THYROID

Normalizing and boosting for thyroid function and hormone productivity, increases thermogenesis and metabolic rate, helps decision making abilities, improves circulation, reduces anxiety, benefits immune function, and helps instill self confidence and trust.

MAMMARY

Improving nipple or mammary gland hormone production thereby strengthening heart and respiratory systems, help give inspiration and motivation to create or accept change, share yourself, and be excited about life; increasing your enthusiasm and longevity.

KIDNEYS/ADRENALS

Increases both kidney and adrenal function through boosting their hormones to help reduce blood pressure, increase blood cleaning/balancing ability, boost stamina, achieve a balance of emotions, increase physical strength, promote tenderness, and reduce pain and inflammation processes.

PANCREAS

Enhances body's ability to protect against, and rid the body of, bacterial, viral, and fungal infections by boosting pancreas hormones so digestion is improved, endocrine system is bolstered, and new bio-rhythms can begin or be re-established.

HUTALHEX

Boosts the ovaries in women and testes in men by supporting and increasing energy for their function. Enhances male production of testosterone and female production of estrogen and their shared hormone progesterone. Helps to overcome fears, increase endurance, boost creativity, and manifest visions.



TRANSFORMING AND REVITALIZING FORMULAS

TISSUE & BONE TRANSFORMING

Used to start regenerating and transforming any form of tissue or bone loss or deterioration by changing the cell's ability to receive light spectrum frequencies through reducing light distortion by balancing blood and lymphatic fluids allowing them to carry away any mutated cells (causing distortion when present), enabling them to generate non-

and lymphatic fluids allowing them to carry away any mutated cells (causing distortion when present), enabling them to generate non-mutated cells.

**A.L.I.
ALTERNATE LIFE IM-
AGING**

A specific, concentrated herb team promotes breaking of habitual thinking patterns to “visualize” alternate realities and possibilities, provoke image alternatives by aligning thinking and understanding hormones with emotional hormones for a totally new way of looking at life. For added boost, may be combined with aged red wine.

TOOTH SUPPORTING

Reconnects tooth nerve pathway with specific organ integrations to repair and revitalize tooth function. When taken multi-generationally it will re-program teeth to re-grow when broken or damaged, also helps prohibit invasion of teeth by bacteria to reduce dental cavities, and helps resist yellowing or aging of teeth.

SELF-REFORMING

Gives the body the tools to restructure, re-build and selectively de-code DNA programs, re-form existing cellular structure as a change from generationally repeated patterns for totally re-designing yourself into your desired form, and receive messages from animals: the eagle (creation), wolf (endlessness), bison (peace) and dolphin (limitlessness), animals who possess the ability to help you do so.

MEMORY REVIVING

Pathologically works with the crystallized structure of bone and cell stored memories, which is best when coupled with the tender touching of skin on skin, to revive past memories and/or past life memories, sharpening the ability to re-member all that is desired in a faster process.

**ABILITY RECLAIM-
ING**

A teaming of herbs, flowers, and foods that offer the body necessary tools for accessing and reclaiming abilities buried by trauma, hidden from memory, lost from experience, layered under fear, or cut off from practice, either voluntarily or by force. Enables one to access bone cell information through dreams, visions, and instructions from extra-ordinary sources about extra-ordinary and extra-sensory abilities.

KICK BUTT

Only to be used at end of repairing and restoration in the healing process when there is 1% or less toxicity left in the body and there is no more resistance to being as you truly are without fear, whereby this combination of herbs and foods will insure the full light spectrum frequencies of the sun to be integrated into the physical body without distortion from their intended form in creation.





Home

About Us

Product List

Service List

Project List

Related Links

Product List

Product List

How To Take Herbs

Testimonial

[< Return to Product List](#)

I would like to thank those of you who expressed condolences on the recent passing of my mother. She suffered a hemorrhagic stroke while she was driving home from my house on 7/30 and passed away on 8/3. My mother's stroke and passing was an enormous shock to my family because she did not have any symptoms or risk factors for a stroke. Just the week before she had gone to her doctor for a check up and received a clean bill of health. She did, however, develop a cold while she was visiting me and had taken Alka Seltzer Cold Plus for 3 days. Since her passing, we have learned that Alka Seltzer is one of the many cold medicines that contains Phenylpropanolamine (PPA) which can cause hemorrhagic strokes or cerebral bleeding even with the first use. I am forwarding a list of other medications that currently use PPA. These medicines are supposedly being recalled but my mother just purchased this medication less than two weeks ago. Pharmaceutical companies have known about this danger for years, we unfortunately, did not.

I urge you to review the list of medicines with PPA and avoid these medications. All drugs containing PHENYLPROPANOLAMINE are dangerous. You may want to try calling the 800 number listed on most drug boxes and inquire about a RE-FUND. Please read this CAREFULLY. Also, please pass this on to everyone you know. STOP TAKING anything containing this ingredient. It has been linked to increased hemorrhagic stroke (bleeding in brain) among women ages 18-49 in the three days after starting use of medication. Problems were not found in men, but the FDA recommended that everyone (even children) seek alternative medicine.

The following medications contain Phenylpropanolamine:

Acutrim Diet Gum Appetite Suppressant	Dexatrim Gels
Acutrim Plus Dietary Supplements	Dexatrim Vitamin C/Caffeine Free
Acutrim Maximum Strength Appetite Control	Dimetapp Cold & Allergy Chewable Tablets
Alka-Seltzer Plus Children's Cold Medicine Effervescent	Dimetapp Cold & Cough Liqui-Gels
Alka-Seltzer Plus Cold medicine (cherry or orange)	Dimetapp DM Cold & Cough Elixir
Alka-Seltzer Plus Cold Medicine Original	Dimetapp Elixir
Alka-Seltzer Plus Cold & Cough Medicine Effervescent	Dimetapp 4 Hour Liquid Gels
Alka-Seltzer Plus Cold & Flu Medicine	Dimetapp 4 Hour Tablets
Alka-Seltzer Plus Cold & Sinus Effervescent	Dimetapp 12 Hour Extended Tablets
Alka Seltzer Plus Night-Time Cold Medicine	Naldecon DX Pediatric Drops
BC Allergy Sinus Cold Powder	Permathene Mega-16
BC Sinus Cold Powder	Robitussin CF
Comtrex Flu Therapy & Fever Relief	Tavist-D 12 Hour Relief of Sinus & Nasal Congestion
Day & Night Contac 12-Hour Cold Capsules	Triaminic DM Cough Relief
Contac 12 Hour Caplets	Triaminic Expectorant Chest & Head
Coricidin D Cold, Flu & Sinus	Triaminic Syrup ! ! Cold & Allergy
Dexatrim Caffeine Free	Triaminic Triaminic Cold & Cough .
Dexatrim Extended Duration	

I just found out and called the 800# on the container for Triaminic and they informed me that they are voluntarily recalling the following medicines because of a certain ingredient that is causing strokes and seizures in children:

Orange 3D Cold & Allergy Cherry (Pink)
 3D Cold & Cough Berry ,
 3D Cough Relief Yellow 3D Expectorant

They are asking you to call them at 800-548-3708 with the lot number on the box so they can send you postage for you to send it back to them, and they will also issue you a refund. If you know of anyone else with small children,

PLEASE PASS THIS ON. THIS IS SERIOUS STUFF!

PLEASE PASS THIS ON. THIS IS SERIOUS STUFF!

DO PASS ALONG TO ALL ON YOUR MAILING LIST so people are informed. They can then pass it along to their families.

To confirm these findings please take time to check the following:

<http://www.fda.gov/cder/drug/infopage/ppa/>

Phone: 555-555-5555
Fax: 555-555-5555
E-mail: someone@example.com

[Home](#) | [About Us](#) | [Product List](#) | [Service List](#) | [Project List](#) | [Related Links](#) | [Product List](#) | [Product List](#) | [Employee Detail](#)


[Home](#)
[About Us](#)
[Product List](#)
[Service List](#)
[Project List](#)
[Related Links](#)
[Product List](#)
[Product List](#)
[How To Take Herbs](#)

Product Detail

[< Return to Product List](#)

Peak Frequency Plant Therapy is phytochemical herbal properties that work with the natural chemistry of the body to repair, balance, and stimulate specific organs, emotions, thinking capacity, energy, and endurance that will assist people in achieving their ultimate, limitless performance. Using botanical quality herbal therapies instead of synthetic chemicals will heal the body without harmful side effects and restore complete health and natural well being!

New C.E.L.L. Therapy –Cellular Enzymatic Liquid Light

Two specially designed herb and food combination formulas to positively restructure how crystallized light is manifested as the human body. Will beneficially change DNA patterns as intended by user and may produce weight loss in some cases as stored fats are removed from the tissues by:

LETTING GO

Changes the mechanism that directs layers of fat to act as padding and protection in the body that hold on to hard-to-deal with emotional fears or traumas caused by generations of family members repeating this negative behavior and it becoming programmed into your cells. The process allows them to be let go and dis-integrate without re-living the emotional trauma.

RESTORING

Restores the mutated enzyme function of the liver, so once again the liver can store and use essential fats, otherwise genetic altering through recurring stress and poor eating practices cause the fats stored in the cells of tissues to putrefy and turn toxic.

Two specially formulated herb teams that will produce reparation of altered hormones of the pineal gland that have produced anger and depression resulting in a loss of motivation and creativity, now able to be replaced with new perceptions and passions, while removing weakened DNA programs by:

PERCEPTION

Changes the pineal gland hormone that causes depression and a loss of ability to visualize your self in the future, to allow a new positive perception of future, your self, and others. It restores hope and understanding, providing peace of mind that gives truer, more accurate feelings and the vision to pursue and create your desired goal.

PASSION

Repairs socially altered pineal gland hormones resulting from anger and resentment of unresolved hurt, and/or feeling trapped in obligation (no longer feeling free due to over work and responsibilities.) Enables greater expression of true self as a result of more systemic flow of hormones that motivate you into action, producing greater creativity, freedom, and passion.



New L.I.G.H.T. Therapy Formulas – Light Infused Geometric High-Thermogenic

A new way of teaming herbal and nutritional elements to formulate specific light spectrum reception. Will allow higher frequencies of light, information, and energy to be received and manifested through the physical body causing a restoration of abilities that have been removed from genetics through repeated patterns of negative progenitor practices. New L.I.G.H.T. Therapy will help rematerialize these abilities as our light and physical bodies are reconnected by remembering our own experiences and memories.

LIMITLESS

Works through the frequency carried by the dolphin beings. This formula holds the frequencies of limitless possibilities and limitless abilities, allowing the brain activity, which limits our abilities in the physical form, to step aside, starting the process of revitalizing the mind awareness to expand into creating realities we have only fantasized, and allow there to be new abilities without limitation.

SUCCESS

Brings to the body the ability, through the mind process (pituitary, pineal, thyroid) of visualizing our passions, realizing peace, and sharing our enthusiasm, to materialize into physical existence a better and bigger future that we want to create, using appreciation for all other beings, with boundless success.



COLLOIDALS

Colloidal minerals are microscopic linear particles of trace minerals measuring approximately 27 ppm of medical grade metals dispersed in a pH balanced carrier fluid intended for topical and internal use. Silver, Gold, and Platinum are prime micro-minerals that comprise the healing, transport, immune, and neural network systems of the human body specially boosted in our process with laminar stone crystal and food grade hydrogen peroxide atoms.

COLLOIDAL SILVER

Medical grade silver electrolytically charged to work internally and externally on the destruction and removal of bacterial components found in rashes, GI tract disturbances, open sores, insect bites, acne, or anywhere healing has been suspended due to infection of bacterial presence. It helps re-hydrate and oxygenate anaerobic cells and increases local circulation. It brings soothing comfort, and reduces redness, localized fever, and pain.

COLLOIDAL GOLD

Medical grade gold electrolytically charged to work internally and externally on the destruction and removal of viral components found in skin, bone, and organ tissue. Viral infestations known as AIDS, Retro-virus, cancer, herpes, shingles, warts, etc. will be destroyed and removed with internal and topical use of colloidal gold. Mutated RNA factors contribute to irregular cell replication, which are healed by internal applications of colloidal gold particles.

COLLOIDAL PLATINUM

Medical grade platinum electrolytically charged to work internally and externally on the destruction and removal of fungal components found in the nerves of the brain, extremities, and torso. Fungal infections in the nails, and those in the nerves, such as those called Parkinson's, Multiple Sclerosis, and Alzheimer's dis-eases may be eased with internal dosages of colloidal platinum. Topical applications will help remove athlete's foot,

Sclerosis, and Alzheimer's dis-eases may be eased with internal dosages of colloidal platinum. Topical applications will help remove athlete's foot, nail fungus, and shingles.



ESSENTIAL & COLD PRESSED OILS

Essential Oils and cold pressed oils are the most volatile and therefore the most vital healing part of any medicinal plant. They are the concentration of herbal medicinal properties and can be taken orally (in critical cases), rubbed on the skin, or put in baths. These can be taken repeatedly and in high concentrations and produce cell oxygenation (anti-oxidants and free radical scavengers) effects as well as bringing; pain reduction (melissa, evening primrose), anti-inflammatory (chamomile, shavegrass), anti-spasmodic (chamomile, lavender), anesthetic (tea tree oil), anti-bacterial (thyme, chamomile, tea tree oil, lavender), anti-viral (myrrh, frankincense) and anti-fungal (tea tree oil), dilating ducts and passages (peppermint, ginger, lobelia), relaxing (lavender, chamomile), removing radiation (thyme)

Repeated use of straight essential oils will cause dryness or irritation to sensitive skin and will need to be used with a carrier oil such as extra virgin olive oil, almond oil, jojoba oil, or aloe vera gel to inhibit irritation. Cold pressed oils can be used directly on skin without drying or burning effects.

APRICOT KERNEL OIL Cold Pressed

The oil found in the pit of the apricot seed is high in natural B17, or laetrile, and is a powerful cancer fighting agent. B17 is also found in cantaloupe seeds, lemon seeds, and pear seeds. All of these seeds and the apricot kernel can be eaten (although they are very bitter) but their properties are much easier attained within the essential oil. Cold pressed oil drops of apricot kernels can be put in water or juice and drunk one, two or three times daily, or the oil can be applied topically over the affected area. It will reduce or eliminate moles, warts, irregular tissue growths, cysts, inflamed lymph, and the like by applying repeatedly and directly to the skin over cancerous area for 2-6 weeks. Both topical and internal methods can be used simultaneously.

CHAMOMILE Essential OIL

Is remarkably effective at removing bacteria and toxins through the skin. Topical applications work to relax and take away cramps as a muscle relaxant, prevents discharge of histamines as an anti-allergenic, and reduces stress: including ulcers and solar plexus pain. Application to crown, temples, forehead, and behind ears reduces sinus and head infections, including the brain, and minimizes migraine headaches. Applications to the stomach and abdomen reduce stomach cramp, burning and gas, and menstrual cramps. Application to the back and/or muscles reduces inflammation, seizure and pain. It is very healing on the skin for almost any kind of rash, including diaper rash and plant rash (must be used with carrier oil on children and open wounds).

LAVENDER Essential OIL (Medicinal)

It is a strong bacterial agent when used topically for wounds, or internally (only medicinal varieties for internal use) for bacterial infection. Is a soothing and relaxing herb, primarily when essential oil is rubbed into the spine and neck improves circulation, promotes dilation, and penetration for flow of energy.

ROSEMARY Essential OIL

The oil of this plant is especially stimulating for the thyroid and all its functions. It boosts all circulation in the body and is a nerve stimulant. Externally used it will ease muscle pain, sciatica, and neuralgia. A drop of essential oil under the tongue relieves nausea and headache.

TEA TREE Essential OIL

The essential oil of this Australian tree is one of the strongest antiseptics in nature as shown when applied to carbuncles and pus-filled infections

TEA TREE Essential OIL

The essential oil of this Australian tree is one of the strongest antiseptics in nature as shown when applied to carbuncles and pus-filled infections that dissolves pus and inhibits bacterial growth without damaging the tissue surrounding it, even in the mouth. It is also a topical therapy for parasitic skin diseases, is astringent and anesthetic, deodorant, and cleanser for wounds, stops *Candida*, heals fungal infections, ringworm and sore throats when gargled or topically applied.

THYME Essential OIL

Powerful repairing and restoring agent for the pancreas (pancreatitis, diabetes, etc.), and can be used internally and externally as one of the strongest anti-*bacterial* agents in nature. Internally thyme is a strong detoxifier for digestive and respiratory infections, asthma, whooping cough, tonsillitis, stimulates digestion, gives physical energy, and helps to prevent viruses from taking hold.



HERBAL TEAS

Instructions for herbal tea making and bath preparation can be found on page 11.
Instructions for dissolving stones using herbal tea can be found on page 14.

CHAMOMILE

This infusion tea is remarkably effective at removing bacteria and toxins through the skin, promoting perspiration. In a tea or a bath chamomile works to relax and take away cramps as a muscle relaxant, prevents discharge of histamines as an anti-allergenic, calms and reduces stress, effective on sinus and head infections, and minimizes migraine headaches. Teas will reduce stomach and abdominal pain and cramping, and menstrual cramps. Tea bath will relax back and or muscle ache and reduces inflammation, seizure and pain. It is very healing on the skin for almost any kind of rash, including diaper rash and plant rash when made as tea, pour over cloth and apply to skin.

DANDELION root

Made as a decoction tea, dandelion is known for breaking up stones in the kidneys, gall bladder, and biliary ducts without causing them to dislodge and be passed. If using this herb to dissolve stones, please refer to the instruction on page 14 for guide lines.

HORSETAIL

This decoction tea is high in silica, and strongly alkalizing. It's good for reducing pain and infection, such as with colds and flue's as it powerfully flushes out uric acid through the kidneys, relieving their symptoms. As a beauty enhancer it strengthens hair, skin, and nails by allowing more minerals for their growth.

PEPPERMINT

An infusion tea peppermint dilates the blood vessels for increased circulation of the transport of white blood cells and potassium throughout the body. This process removes bacterial, viral and fungal anti-bodies and their toxins while promoting detoxification through sweating-out of lymph fluids through the skin. The result is increased the appetite, better digestive enzyme production, and reduction of headaches.

SARSAPARILLA

Made as a decoction tea this root powerfully flushes our toxins through the kidneys, effectively neutralizing food poisoning, snake bite, and intestinal toxins. Sarsaparilla, often called sasparilla, was the original natural root in root beer and can still be found as the herbal flavor in natural root beer. It is a powerful detoxifier and is used in many natural health products.

root in root beer and can still be found as the herbal flavor in natural root beer in health food stores. It has the ability to repair both kidney and adrenal damage, and is capable of removing symptoms of syphilis, hives, rash, and acne. It is an overall physical strengthener, alertness booster, sweats inducer, diuretic, and has natural properties like testosterone (anabolic steroid) that works to build muscles, and rejuvenates male sexuality.

STINGING NETTLES

Iron from Stinging Nettles supplies the single most important bodily function element for producing hemoglobin and oxygenation of red blood cells. Iron improves anemia, chronic fatigue, and gray pallor. Disease symptoms, such as arthritis, cancer, Candidiasis, and herpes impair iron utilization by the body and need to be supplemented. Nettles are a total hormone booster by increasing production in every part of the body, and its natural anti-histamine properties helps allergy symptoms and swelling reactions produced by certain insect bites. Nettles also contains high levels of organic calcium for bones, teeth, muscles, and helping kidneys pH balance blood fluids and stomach balance hydrochloric acid.

THYME

Powerful repairing and restoring agent for the pancreas (pancreatitis, diabetes, etc.), and can be used internally and externally as one of the strongest anti-*bacterial* agents in nature. Internally thyme is a strong detoxifier for digestive and respiratory infections, asthma, whooping cough, tonsillitis, stimulates digestion, gives physical energy, and helps to prevent viruses from taking hold.

Rain Forest Treasures



Healing Products from Nature's Prime Sources

[Home](#)

[About Us](#)

[Product List](#)

[Service List](#)

[Project List](#)

[Related Links](#)

[Product List](#)

[Product List](#)

[How To Take Herbs](#)

Product Detail

[< Return to Product List](#)

Peak Frequency Plant Therapy Application Chart

In laboratory settings it is relatively simple to find the organic chemical properties of phyto-medicines, however it is not as simple to determine how the internal functions of the human body use these herbal properties. It is here in the field of phytoceuticals (plant chemicals) that indigenous healers, shamans, medicine men and women excel at both traditional uses and modern applications based on the science of experiencing the profoundly beneficial effects that phyto-medicines have on the human body. Years of research and study by indigenous healing masters have gone into developing these high quality herbal products that produce precise responses in the body with the use of specific herbs and their teaming effects.

Bones, Teeth & Gums

Lemon Balm
Marshmallow
Myrrh
Nettles-Iron & Calcium
Tissue & Bone Transforming
Tooth Regenerating

Olfactory, Eye & Inner Ear

Myrrh
Suma
Red Beet
Rice-E

Immune & Lymph Function

Circulation Improving
Echinacea
Golden Rod
Red Raspberry leaf
Toxin Neutralization Formula
Witch Hazel

Liver, Gall Bladder & Cholesterol Function

Alfalfa
Barley Essence
Hawthorn Leaf
Olive Leaf
Peppermint

Digestive, Elimination & Stomach Function

Brain/Head Function

Mind
Focus
Pituitary
Pineal
Marigold
Mustard
Chamomile

Sinus & Tonsil Function

Lemon Balm
Blue Flag
Marjoram

Thyroid Function

Self-Identity
Thyroid
Cayenne
Rosemary
Kelp-Iodine

Joint Function

Joint Support
Nettles-Iron & Calcium
Grass-C
Horsetail
Juniper Berry

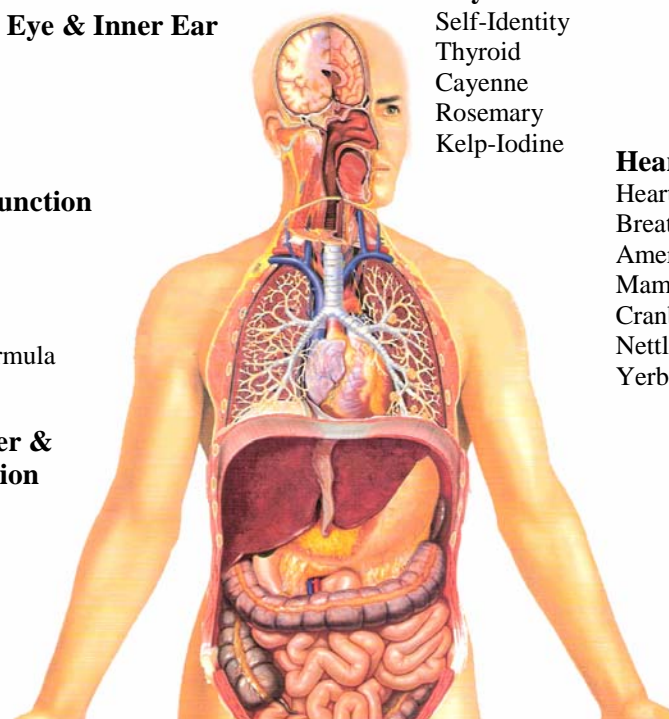
Heart, Lung & Bronchia Function

Heart Harmony
Breathe Easier
American Ginseng
Mammary
Cranberry
Nettles-Iron & Calcium
Yerba Santa

Kidney/Adrenal/Skin Function & Blood Pressure

Relations
Kidneys/Adrenals
Sarsaparilla
Hawthorn Berry
Nettles-Iron & Calcium
Acne Neutralizer

Bladder/Skin Function



Digestive, Elimination & Stomach Function

- Balance
- Pancreas
- B-Complex Vitamins
- Anti-Bacterial Formula
- Centuary
- Gotu Kola
- Thyme
- Wheat-Magnesium

Nerve & Tissue Function

- Anti-Viral Formula
- Anti-Fungal Formula
- Passion Flower
- Horseradish
- Nettles-Iron & Calcium
- Tissue & Bone Transforming

Total System Boost

- ALI
- Passion
- Perception
- Limitless
- Success

Stress Reducing

- Stress Free Formula
- B-Complex vitamins
- Muscle Relaxing
- Sleep Deeper
- Super Minerals

Bladder/Skin Function

- Grass-C
- Kava-Kava
- White Willow Bark
- Chard-Zinc

Testes/Prostate & Ovary/Uterus Function

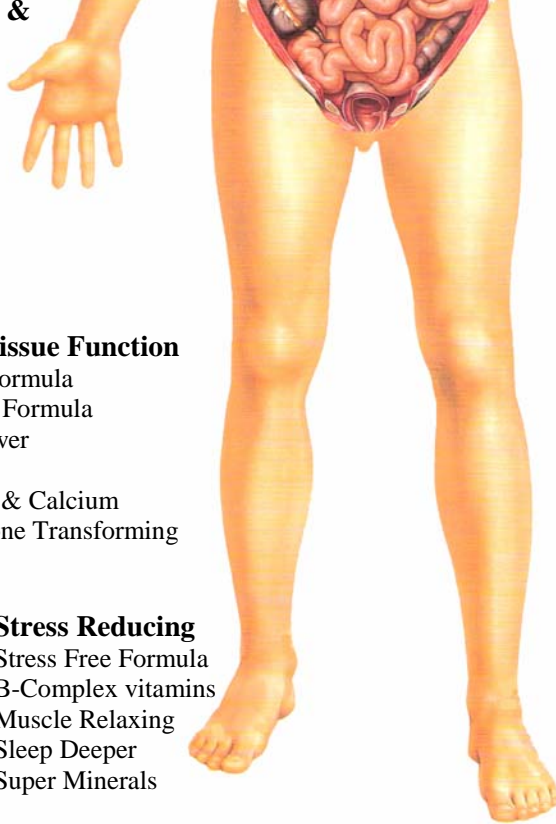
- Peace
- Hutalhex
- Angelica
- Anise
- Noni
- Juniper Berry
- Suma
- Self-Reforming

Colon & Intestinal Boosting

- Balance
- Ginger
- Gotu Kola
- Wheat-Magnesium
- Red Raspberry

Weight Reducing

- Barley Essence
- Letting Go
- Restoring
- Weight Loss
- Alfalfa
- Garcinia
- Schizandra
- B-Complex Vitamins



Application Chart

Peak Frequency Plant Therapy

Rain Forest Treasures



Healing Products from Nature's Prime Sources

[Home](#)

[About Us](#)

[Product List](#)

[Service List](#)

[Project List](#)

[Related Links](#)

[Product List](#)

[Product List](#)

[How To Take Herbs](#)

Healing Differences

[< Return to Product List](#)

Farmacy vs. Pharmacy

*True healing medicines are grown in nature's elements,
Symptom treatment is developed by multi-national chemical companies in laboratories.*



Phytoceutical = Plant medicines

Grown in nature

Pharmaceutical = Synthetic treatments

Manufactured in laboratories



Human beings have the same organic make-up of plants and other earthly elements. We have demonstrated to ourselves over the years that by our addition of synthetic chemicals to the earth we have made her land, air, and waters contaminated. We have put synthetic chemicals into our natural bodies and contaminated our tissues, organs, and hormones until they are dis-eased.

Plants that are for eating are food. Plants that are for healing are medicine. True medicinal plants have the ability to cure dis-ease processes without harsh, invasive, harmful, or degenerative side-effects. These kinds of medicine are known as phyto-ceuticals and grow abundantly in nature, readily available for the picking.

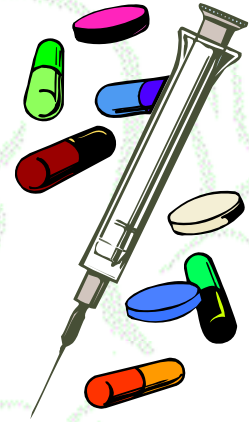
Synthetic chemical companies manufacture pharmaceutical drugs that mimic the medicinal properties of plants, but are used for symptom treatments only. Each pharmaceutical grade drug can produce harmful and/or degenerative side-effects for every symptom it treats, and often ends up causing more of what the pharmaceutical is being taken to prevent or diminish. Every pharmaceutical drug is a direct or indirect copy of a natural plant medicine property, in synthetic chemical form.

Given that herbs are the forerunner of all pharmaceutical grade synthetic drugs, let's look at the herb Valerian. Valerian is a fern-like plant that grows in shaded, damp environments and possesses the ability to calm, soothe, and relax the solar plexus and can help one achieve a state of non-stressed, relaxed, mental ease without ill side effects. The synthetic, pharmaceutical "copy" of this herbal effect has been named Valium, which synthetically re-produces the same effect, but has caustic, and habit forming side effects. Synthetic chemical pharmaceuticals are toxic for the human body while many plant chemicals, called phytoceuticals, are harmonious with the organic nature of the human body and have natural, organic, and pure medicinal (healing with

the human body while many plant chemicals, called phytochemicals, are harmonious with the organic nature of the human body and have natural, organic, and pure medicinal (healing without invasion) properties.

Pharmaceutical grade drugs may mask disease by relieving symptoms such as swelling, pain, irritation, etc. while allowing the cause of the symptom to go unresolved. Masking the origin of a symptom is dangerous because it allows the original cause of the symptom to continue unchecked, while causing damage or blockage to the causal organ from which the symptom arose. Original disease going unchecked or dismissed until more critical symptoms arise leads to further damage and crisis. According to the CDC's (Center for Disease Control) *Morbidity and Mortality Weekly Report* in February of 2007, researchers found that deaths from prescription drugs rose from 4.4 per 100,000 people in 1999 to 7.1 per 100,000 in 2004, representing a jump from 11,000 deaths to 20,000 deaths in the span of five years.

Even more alarming is the statistic of individuals killed by over medication or mixed pharmaceuticals. The term that the pharmaceutical industry has coined for itself called "Polypharmacy", meaning *many drugs*, is indicative of its widespread application. Deaths from polypharmacy (mixing two or more pharmaceutical drugs) has reached the status of number one killer in the United States, even higher than the previous highest death rate of heart disease, and certainly more than cancer and diabetes. In the year 2006 polypharmacy killed over one million, seven hundred thousand (1,700,000) people, and the death toll keeps rising.



On the other hand, many farm-a-ceutal plants have the abilities that provide not only symptom relief, without damage, blockage, or harmful side effects they also provide the tools for the body to repair existing damage and restore function to the causal problem, thus eliminating its symptom. With function restored and symptoms gone, immunity returns, and natural vitality is restored. The road to health may be longer for some than others, but the body's design for healing will always prevail, unless we do something to stop its efforts.



This is not to say that every plant that grows in nature is healing for humanity. There are plants that are poisonous, can cause rashes, diarrhea, vomiting, swelling, pain, and so forth. It is the knowledge and use of each plant property medicine that becomes the art of respected and hon-

Rain Forest Treasures



Healing Products from Nature's Prime Sources

[Home](#)

[About Us](#)

[Product List](#)

[Service List](#)

[Project List](#)

[Related Links](#)

[Product List](#)

[Product List](#)

[How To Take Herbs](#)

Herbs as Tea

[< Return to Product List](#)

The use of herbs as tea are best when flushing and neutralizing are needed, such as in the cases of fever, bloating, acidic conditions, swelling, excess mucous production, etc. The properties of herbs carry the same effectiveness in tea form, except they are not as strong nor do they have the same intensive and rapid healing results as extracts.

*Please see Note at bottom



Herbal Tea Making Instructions

Most westerners have little training on how to make a healing cup or pot of tea. Herbal teas provide the most all around medicinal properties that can be lost or evaporated if proper attention is not used during preparation. Tea can be used when ever flushing, calming, or neutralizing is required, and is especially good for adding to baths to break fevers, cause a detoxifying sweat, absorb healing properties through the skin, or just to relax.

In times of illness herbal tea baths can be both healing and restoring. The skin, our largest organ, can absorb the medicinal properties of herbs in a bath in about 20 minutes. In that same 20 minutes our skin can soak up 2 cups of fluids (in cases of dehydration). Knowing what herbs to use in the tub can bring relief to the care giver as well as to those that are ill.

Whenever possible use freshly picked and dried herbs, do NOT use tea bags for making tea as they are commonly infested with many harmful molds that are infused into the tea water, and bleached tea bags infuse tea water with chlorine and other harmful chemicals used in making the bag.



T
H
Y
M
E

The properties of herbs when used as a tea are similar to those that are listed in the [Single Herbs](#) section of [Peak Frequency Plant Therapy](#). Please refer to that section for proper medicinal uses of teas.

If adding tea to bath water, make sure to prepare a stronger version than recommended for drinking (i.e.; four rounded tablespoons of herb per 1/2 gallon of water) and strain the tea before adding it to comfortably warm bathing water. 1 gallon of water made with 8 rounded tablespoons of dried and cut herb is ideal for a healing bath.

Adding Herbal Teas to the bath water:

Adding Herbal Teas to the bath water:

- Thyme tea will break a fever
- Chamomile tea will cause a sweat, especially when drinking a cup while soaking in a bath of chamomile tea
- Sage tea will purify blood fluids through the skin, especially if drunk during the bath
- Golden Rod tea will purify the lymphatic fluids through the skin
- Peppermint opens constricted ducts and will stimulates appetite
- Ginger will stimulate circulation and warm the body
- Arnica will soothe bruises and contusions
- Juniper berry will neutralize uric acids in skin tissues and joints
- Rosemary will stimulate thyroid and metabolic activity
- Lavender will sooth, calm, and quiet nerves, thinking, and emotions



Step by step preparations for tea making:

1. Choose herb(s) that best suit your need or pleasure, any herbs may be combined together or consumed as a single herb tea or bath. If combing infusion with decoction methods, boil decoction herbs first, then add infusion herbs before steeping
2. Use a stainless steel, glass, or ceramic pot with a tight fitting lid (NO NOT use aluminum cookware)
3. Fill pot with desired amount of water (rule of thumb for water amount is 1 cup of water for 1 level teaspoon of dried and cut or shaved herb, or 1/2 teaspoon of powdered herb)
4. Use distilled or mountain spring water for best result
5. Bring water to a boil on top of a stove (DO NOT use microwave)
6. If making infusion type tea, add tea after water has boiled—removing pot from stove burner, adding herb, and quickly covering the pot with its lid, the let it rest (steep), still tightly covered for 5-15 minutes. The longer the herbs steps in the tea, the stronger the tea. Strain and drink, or if too hot, strain and cover tightly until cooled. Store excess in glass (NOT plastic), airtight container
7. If making decoction type tea, after rolling boil has begun, reduce heat to simmer, add herb, cover tightly with lid, and simmer for 15-30 minutes. Once simmering is complete remove pot from heat, let it rest (steep), still tightly covered for another 15 minutes. Strain and drink, or if too hot, strain and cover tightly until cooled. Store excess in glass (NOT plastic), airtight container
8. If making 2-8 cups to be consumed throughout the day DO NOT store herbal tea more than 8-10 hours. Living organisms that have specific function inside your body will begin doing their job during storage and will no longer be effective in your body after 8-10 hours
9. Herbal teas make be drunk hot or cold, sweetened or unsweetened (raw honey and grade B maple syrup are suggested), and/or with added lemon if desired

The two types of herbal teas that require different methods of extracting their properties during the brewing process are known as infusion and decoction.

Infusion herbs are never boiled as their properties are released with just the application of heated water. Infusion herbs are the tender leaves, flowers, soft stems, and berries, and only need to be added to boiled water, or boiled water can be poured over them. In either case, once the recently boiled water and the herbs make contact, the container needs to be tightly covered instantly as the first and most potent healing property of the herb, called essential oil, is released, quickly dissipates, and is lost in the steam. The essential oils of these herbs are very desirable and the most volatile, meaning they are readily available, and can be seen floating on the top of the tea water when tea is made properly.

Decoction tea is made with herbs from barks, roots, pods, seeds, and reeds and needs to be boiled from 15 to 30 minutes, depending on the thickness or hardness of the herbal fiber. Barks, seeds, and roots usually require closer to 15 minutes and pods, reeds, grains, and

Barks, seeds, and roots usually require closer to 15 minutes and pods, reeds, grains, and grasses need closer to 30 minutes. The essential oils of these herbs are not released until they have been heated and well soaked.

Tea Type Instructions

Infusion (leaves, flowers, stems, and berries)



Echinacea flower

Bring water to a boil then remove from heat. Add 1 level teaspoon dried herb per every 1 cup of water boiled. Cover with air tight lid and steep for 15-30 minutes. (The longer herb steeps in water, the stronger it will be.) Strain tea through cheese cloth or strainer into cup and drink straight or sweetened with raw honey or grade B maple syrup. Any herbal teas may be combined.

Decoction (barks, roots, reeds, grains, and seeds)

Bring water to a boil in covered sauce pan and then reduce heat to simmer. Add 1 rounded teaspoon dried herb per every 1 cup of boiling water. Replace cover and continue boiling for 15-30 minutes and then steep for 15-30 minutes. (The longer herb steeps in water, the stronger it will be.) Strain tea through cheese cloth or strainer into cup and drink straight or sweetened with raw honey or grade B maple syrup. Any herbal teas may be combined.



Ginger root

Examples of Decoction Herbs

Angelica root
Anise seeds
Barley grain
Cinnamon Bark
Clove seeds
Ginger root
Horsetail/Shavegrass
Kava-Kava Root
Marshmallow root
Myrrh gum
Noni/Morinda dried fruit
Sarsaparilla root
White Willow bark

Examples of Infusion Herbs

Alfalfa leaves
Centaury leaves
Chamomile flowers
Echinacea flower
Hawthorn berries and leaves
Juniper berries
Lavender flowers
Marigold flower
Peppermint leaves
Raspberry leaves
Sage leaves
Thyme leaves
Witch Hazel leaves

Rain Forest Treasures



Healing Products from Nature's Prime Sources

[Home](#)

[About Us](#)

[Product List](#)

[Service List](#)

[Project List](#)

[Related Links](#)

[Product List](#)

[Product List](#)

[How To Take Herbs](#)

Peak Frequency Plant Therapy Offering List

Peak Frequency Plant Therapy is a NGO Jaxakaton Nation Indigenous Humanitarian Project, protected under international law as written in the [United Nations Declaration on the Rights of Indigenous Peoples](#), and adopted as United Nations Indigenous Peoples Number 215/93

All Herbal Extracts are in 1 ounce, amber glass bottles with dropper, unless otherwise indicated

Qty	Item	Description	Offering	Total
		SINGLE HERBS		
	GO-2	Alfalfa Gall bladder repair, silica, minerals, anti-swelling	\$14.00	
	B-1	American Ginseng Mammary repair, sexual function, oxygenating	\$15.00	
	R-4	Angelica (Dong Quoi) Testes/Ovaries repair, reduce insomnia/depression	\$14.00	
	R-1	Anise Release fears, anti-gas/mucous/cramp, de-parasite	\$14.00	
	H-1	Barley Essence Alkalize, improves nutrients, reduce cholesterol	\$14.00	
	GO-6	Blue Flag Sinus/Tonsil repair, sore throat & cough reducing	\$14.00	
	O-4	Centaury Stomach/Small intestine repair, heal holes in aura	\$14.00	
	GO-3	Chamomile Brain repair, anti-cramping/swelling, alkalizing	\$14.00	
	H-9	Chaste Berry (vitex) Sexual hormone balance, halt uterus hemorrhage	\$14.00	
	BR-1	Chocolate All hormones balance, mineralizing, aids intimacy	\$14.00	
	PF-1	Coffee (Papua New Guinea) Flushes toxins thru colon, alkalizing, OK for ulcer	\$14.00	
	B-3	Cranberry Lymph repair, neutralize uric acid in joint & urine	\$14.00	
	H-2	Echinacea Kills throat & tonsil bacteria, stops muscle cramps	\$14.00	
	R-5	Fenugreek Stimulates testes, ovaries, fertility, creativity	\$14.00	
	BO-1	Garcinia Activates organs, accelerates healing	\$14.00	

For a full description of each single herb property please refer to the more definitive explanations in the Peak Frequency Plant Medicine pages 4-5.

Sample of bottled herbal extract

		Activates organs, accelerates healing		
FY-2	Ginger	Stimulates appetite & circulation, motion sickness	\$14.00	
H-6	Golden Seal	Eliminates bowel infections (not for daily use)	\$14.00	
B-4	Golden Rod	Repair respiratory, stimulate kidneys & immunity	\$14.00	
O-3	Gotu Kola	Repair bile duct, reduce stress, improve IQ	\$14.00	
H-3	Hawthorne Berries	Blood pressure and circulation normalizing	\$14.00	
Y-3	Hawthorne Leaves	Repair liver, support blood to detoxify	\$14.00	
H-4	Hops	Fall asleep faster, reduce waking during sleep	\$14.00	
GR-4	Horseradish	Repair spinal chord & nerve damage & swelling	\$14.00	
H-5	Horsetail (Shavegrass)	Silica, alkalize, reduce pain & infection	\$14.00	
R-3	Juniper Berries	Restore ovary/testes, reduce chronic arthritis	\$14.00	
V-2	Kava-Kava	Repair bladder, reduce stress/anxiety, keeps alert	\$14.00	
GO-5	Lemon Balm (Melissa)	Repair sinuses/teeth, relax emotions, kills virus	\$14.00	
Y-4	Marigold (Calendula)	Repair pituitary, opens awareness & intelligence	\$14.00	
H-10	Marjoram	Hydrates sinuses, relieve & relax sinus allergies	\$14.00	
GO-1	Marshmallow	Repairs bones, wound healing, repairs cells	\$14.00	
Y-1	Mustard	Repairs pineal, better immunity & comprehension	\$14.00	
GR-2	Myrrh	Repair eyes, mouth/gums, anti-viral, immunity	\$14.00	
R-2	Noni (Morinda)	Restore testes/ovaries, build T-cells, anti-depress	\$14.00	
V-4	Passion Flower	Repair solar plexus/nerves, helps emotions/sleep	\$14.00	
F-EB	Peppermint	Increase circulation & appetite, reduce headache	\$14.00	
GR-3	Red Beet	Purify red blood, stop bacterial and tumor growth	\$14.00	
PF-2	Red Clover	Boost bone potassium, build B-cells & immunity	\$14.00	
O-2	Red Raspberry Leaves	Repair appendix, white blood cells/muscle organs	\$14.00	
H-7	Sage	Purify blood, aids kidneys, clears toxic shock	\$14.00	
V-1	Sarsaparilla	Repair kidneys, antidote food poison/snake bite	\$14.00	
BO-3	Schizandra	Repair circulation/organ potassium, strengthens	\$14.00	

**Single Herbs
Available in 2 ounce size:**

Alfalfa
American Ginseng
Anise
Chamomile
Chaste Berry
Echinacea
Golden Rod
Lemon Balm
Myrrh
Noni

BO-3	Schizandra Boost circulation/organ potassium, strengthens	\$14.00	
Y-2	Suma Repair inner ear, & equilibrium, reduce swelling	\$14.00	
O-1	Thyme Repair pancreas, anti-bacterial, detoxify digestion	\$14.00	
V-3	White Willow Bark Restore skin, thin blood, reduce pain/swelling,	\$14.00	
GO-4	Witch Hazel Repair spleen, aids blood, hemorrhoids, & bruises	\$14.00	
H-8	Wild Yam	\$14.00	
B-2	Yerba Santa Repair heart & lungs, balance self-expression	\$14.00	

Myrrh
Noni
Sarsaparilla
Thyme
White Willow Bark

All offered at \$21.00
Except for
American Ginseng
Offered at \$23.00

Qty	Item	Description	Offering	Total
VITAMINS & MINERALS				
	VM-1	B-Complex vitamins & Potassium 1 oz Reduce dis-ease, pH balance, improve digestion, & reduce physical, emotional, mental stress	\$10.00	
	VM-B2	B-Complex vitamins & Potassium 2 oz	\$18.00	
	VM-B8	B-Complex vitamins & Potassium 8 oz	\$50.00	
	VM-B16	B-Complex vitamins & Potassium 16 oz	\$80.00	
	VM-2	Grass-C (vitamin C) Rebuild tissues, release addictions, remove toxins, & repair/restore vessels, organs, and membranes	\$10.00	
	VM-22	Grass-C (vitamin C) 2 oz	\$19.00	
	VM-3	Rice-E (vitamin E) 1 oz Repair damaged nerve and brain tissue, boost hormone system, and disintegrate blood clots	\$10.00	
	VM-33	Rice-E (vitamin E) 2 oz	\$19.00	
	VM-4	Super Minerals 1 oz Build & restore organs, bones, blood, & detoxify	\$10.00	
	VM-44	Super Minerals 2 oz	\$19.00	
	VM-5	Wheat—Magnesium 1 oz Heart & nerve health, restore bones and bowels	\$10.00	
	VM-55	Wheat—Magnesium 2 oz	\$19.00	
	VM-6	Chard—Zinc 1 oz Support kidneys & skin function (non nausea)	\$11.00	
	VM-66	Chard—Zinc 2 oz	\$20.00	
	VM-7	Nettles—Iron & Calcium 1 oz Produce hemoglobin & transfer oxygen for red blood, strengthen bones, teeth, hair, anti-histamine, hormone and energy booster	\$10.00	
	VM-77	Nettles—Iron & Calcium 2 oz	\$19.00	
	VM-8	Kelp—Iodine 1 oz Support thyroid/parathyroid function, resist bacterial infection, increase metabolism, form thyroxin to balance estrogen & testosterone	\$10.00	
	VM-88	Kelp—Iodine 2 oz	\$19.00	

VM-88	Kelp—Iodine	2 oz	\$19.00	
	AMINO ACIDS			
AA-1	Amino Acid Complex Protein building block, oxygen to cells, parasites	1 oz	\$11.00	
AA-11	Amino Acid Complex	2 oz	\$20.00	
	LIGHT CENTER FORMULAS			
LF-1	Mind-Inyan Boost hormone & growth factors, improve brain and intelligence, open to truth and awareness		\$15.00	
LF-2	Focus-Chapi Speed up all body functions, improve study & understanding, restore hope and clarity		\$15.00	
LF-3	Self Identity-Chanli Increase self confidence, worth and decision making ability, release judgment, act on choices		\$15.00	
LF-4	Motivation-Wagle Shun Stimulate circulation, detoxification, & nutrient absorption, increase longevity and reduce aging		\$15.00	
LF-5	Relations-Yumeni Restore kidneys, reduce inflammation, reduce pain & relationship stress, open communications		\$15.00	
LF-6	Balance-Wi Normalize digestion & elimination, remove bacteria & virus, restore biorhythm and well being		\$15.00	
LF-7	Peace-Luta Strengthen and correct sexual hormones, reduce fear, & promote tenderness, endurance, creativity		\$15.00	
LF-11	Mind-Inyan	2 oz	\$28.00	
LF-22	Focus-Chapi	2 oz	\$28.00	
LF-33	Self-Identity-Chanli	2 oz	\$28.00	
LF-44	Motivation-Wagle Shun	2 oz	\$28.00	
LF-55	Relations-Yumeni	2 oz	\$28.00	
LF-66	Balance-Wi	2 oz	\$28.00	
LF-77	Peace-Luta	2 oz	\$28.00	
	Acute Formulas			
AF-1	TRF -Trauma Reducing Formula Reduce pain and dis-ease through emotional trauma release		\$15.00	
AF-2	TNF -Toxin Neutralixation Formula For acute toxicity of food poisoning, heavy metals, snake bite, insect bite, and diarrhea		\$15.00	
AF-3	SFF -Stress Free Formula Diminish stress hormones & irritability, aid B-complex production and utilization, balance pH		\$15.00	
AF-4	ABF -Anti-Bacterial Formula Strong anti-bacterial components kill and remove bacteria for acute infections, reduce swelling, fever, nausea, and pain		\$15.00	
AF-5	AVF -Anti-Viral Formula Strong anti-viral components to kill and remove viruses and remove their symptoms		\$15.00	
AF-6	AFF -Anti-Fungal Formula Strong anti-fungal components to kill and remove fungi, use topically on athletes foot & nail fungus		\$15.00	

All Light Center Formulas available in 2 ounce sizes

Offered at \$28.00

All Acute Formulas available in 2 ounce sizes

Offered at \$28.00

		Strong anti-fungal components to kill and remove fungi, use topically on athletes foot & nail fungus	
	AF-7	APDF -Acute Pain Diminishing Formula Reduce all body pain, especially back, head, muscles and skeletal, use with white willow bark	\$15.00
	AF-11	TRF	2 oz \$28.00
	AF-22	TNF	2 oz \$28.00
	AF-33	SFF	2 oz \$28.00
	AF-44	ABF	2 oz \$28.00
	AF-55	AVF	2 oz \$28.00
	AF-66	AFF	2 oz \$28.00
	AF-77	APDF	2 oz \$28.00

[Home](#) | [About Us](#) | [Product List](#) | [Service List](#) | [Project List](#) | [Related Links](#) | [Product List](#) | [Product List](#) | [Employee Detail](#)



[Home](#)

[About Us](#)

[Product List](#)

[Service List](#)

[Project List](#)

[Related Links](#)

[Product List](#)

[Product List](#)

[How To Take Herbs](#)

Project List

Peak Frequency Plant Therapy is a NGO Jaxakaton Nation Indigenous Humanitarian Project, protected under international law as written in the United Nations Declaration on the Rights of Indigenous Peoples, and adopted as United Nations Indigenous Peoples Number 215/93

Alcohol Extracts, Easing Formulas, & New L.I.G.H.T. Therapy

Qty	Item	Description	Offering	Total
		ALCOHOL EXTRACTS		
	AE-1	Balance-Wi (alcohol extract)	\$15.00	
	AE-2	B-Comp/Potas (AE) 1 oz.	\$10.00	
	AE-3	B-Comp/Potas (AE) 2 oz.	\$18.00	
	AE-38	B-Comp/Potas (AE) 8 oz.	\$50.00	
	AE-4	Gotu Kola (alcohol extract)	\$10.00	
	AE-5	Hawthorne Leaf (AE)	\$10.00	
	AE-6	Echinacea (alcohol extract)	\$10.00	
	AE-7	Thyme (alcohol extract)	\$10.00	
	AE-8	Anti-Bacterial Formula (AE)	\$15.00	
	AE-9	Anti-Viral Formula (AE)	\$15.00	
	AE-10	Anti-Fungal Formula (AE)	\$15.00	
	AE-11	Acute Pain Diminishing Formula (alcohol extract)	\$15.00	
		EASING FORMULAS		
	EF-1	Breathe Easier relieves breathing, sinus, asthma, and allergies	\$15.00	
	EF-2	Joint Support arthritis pain, swelling in joints, repairs joint, bone loss damage.	\$15.00	
	EF-3	Circulation Improving Blood, lymph flow, & oxygen to head, body, hands, feet	\$15.00	
	EF-4	Heart Harmony Smooth heart beat/lung rhythm through circulatory system	\$15.00	
	EF-5	Muscle Relaxing Eases stressed, tight muscles to re-pattern into relaxing.	\$15.00	

Alcohol based Formulas can be used by those with pancreas weakness or dysfunction until pancreas is restored and then graduation to the more powerful glycerin based herbs can be utilized.

Thank you for supporting the Treasures of the Rain Forest. We work to facilitate and maintain rain forest propagation and continued growth, valued for rain forest's ability to produce pure oxygen which cleans up air pollution. Your contributions for this humanitarian project also goes to help support indigenous peoples and their choice to remain living without the intervention of foreign government oversight.

		Eases stressed, tight muscles to re-pattern into relaxing.		
	EF-6	Sleep Deeper deeper, restful sleep (with hops to fall asleep faster)	\$15.00	
	EF-7	Glucose Adjusting 2 oz Regulates blood sugar levels while helping nutrient absorption	\$38.00	
	EF-8	Weight Loss 2 oz diminish appetite, "sweet tooth", and diverts fats out of tissue.	\$43.00	
		New L.I.G.H.T. Theapy Light Infused Geometric Hyper-Thermogenic		
	NLT-1	Limitless 2 oz allow brain activity to step aside, start process of mind expand into creating without limitation.	\$42.00	
	NLT-2	Success 2 oz allow process of passion, peace, and inspiration to materialize with boundless success.	\$42.00	

Qty	Item	Description	Offering	Total
		New C.E.L.L. Therapy Cellular Enzymatic Liquid Light		
	NCT-1	Letting Go 2 oz Changes layers of fat protecting fears/traumas locked into cell patterns to be easily let go	\$41.00	
	NCT-2	Restoring 2 oz Restores liver function to use fats, not store fats in tissues	\$41.00	
	NCT-3	Passion 2 oz Resolves anger and resentment of emotional pain, responsibility, and obligation enabling productivity, creativity, freedom, and passion.	\$41.00	
	NCT-4	Perception 2 oz Provides hope, understanding, and peace of mind that gives ability to pursue and create desired goal.	\$41.00	
		HORMONE BOOSTERS Combinations of herbs & foods for increased major hormone gland function		
	HB-1	Pituitary	1 oz \$12.00 2 oz \$23.00	
	HB-2	Pineal	1 oz \$12.00 2 oz \$23.00	
	HB-3	Thyroid	1 oz \$12.00 2 oz \$23.00	
	HB-4	Mammary	1 oz \$12.00 2 oz \$23.00	
	HB-5	Kidneys/Adrenals	1 oz \$12.00 2 oz \$23.00	
	HB-6	Pancreas	1 oz \$12.00 2 oz \$23.00	
	HB-7	Hutalhex	1 oz \$12.00 2 oz \$23.00	

HB-7	Hutalhex	1 oz	\$12.00
		2 oz	\$23.00
	TRANSFORMING & REVIVING FORMULAS		
TRF-1	ALI Alternate Life Imaging		\$20.00
TRF-2	Tissue & Bone Transforming		\$17.00
TRF-3	Tooth Supporting Formula		\$17.00
TRF-4	Self-Reforming Formula		\$17.00
TRF-5	Memory Reviving Formula		\$17.00
TRF-6	Ability Reclaiming Formula	2 oz	\$32.00
TRF-7	Kick Butt Formula		\$17.00
	COLLOIDAL MINERALS 27 ppm medical grade		
	Colloidal Silver	2 oz	\$15.00
	Speeds healing of bacteria		
	Colloidal Gold	2 oz	\$15.00
	Speeds healing of virus		
	Colloidal Platinum	2 oz	\$15.00
	Speeds healing of fungus		
	ESSENTAIL OILS & COLD PRESSED OILS		
EO-1	Apricot Kernel oil	1 oz.	
EO-2	Chamomile essential oil	.5 oz.	
EO-3	Lavender essential oil	.5 oz.	
EO-4	Rosemary essential oil	.5 oz.	
EO-5	Tea Tree essential oil	.5 oz.	
EO-6	Thyme essential oil	.5 oz.	
	HERBAL TEAS (dried)		
HT-1	Chamomile	3 oz.	
HT-2	Dandelion	3 oz.	
HT-3	Horsetail	3 oz.	
HT-4	Peppermint	3 oz.	
HT-5	Sarsaparilla	3 oz.	
HT-6	Stinging Nettle	3 oz.	
HT-7	Thyme	3 oz.	
	PARASITE REMEDY		
	Black Walnut Hull Extract (green hulls)	4 oz.	
	Wormwood Combination Capsules (100 count) size 00		
	Cloves Capsule (100 count) size 00		
	Amino Acid Complex		

	Amino Acid Complex Extract	1 oz.		
	ABNORMAL TISSUE REM-EDY			
	Black Salve	.5 oz		

Subtotal	
Freight	
Total Donation	

Shipping and Handling

Handling and Materials is \$4.50

Please add to shipping rates

Shipping rates:

- 1-10 ounces—\$6.50
- 11-20 ounces—\$9.00
- 21-30 ounces—\$14.50
- 31 ounces plus— \$19.00

unless entire order totals over \$250.00 then shipping and handling is complimentary.

All shipping is ground rates.

Overnights or next day is additional and figured at distance, weight, and location.

If requesting by mail or phone, please make donation by check or money order at time of product request. Funds must be cleared before product request is fulfilled.

We reserve the right to select method of shipping when we pay the freight.

Make bank checks and money orders payable to *Treasures of the Rainforest*

All orders are shipped on Tuesdays and Wednesdays

Please allow 7-10 week days for shipment.



[Home](#) | [About Us](#) | [Product List](#) | [Service List](#) | [Project List](#) | [Related Links](#) | [Product List](#) | [Product List](#) | [Employee Detail](#)

[Home](#)[About Us](#)[Product List](#)[Service List](#)[Project List](#)[Related Links](#)[Product List](#)[Product List](#)[How To Take Herbs](#)

Instructions for taking herbals extracts

[< Return to Employee List](#)

Caption describing picture or graphic.

Taking liquid herbs is far easier than pills or capsules and can be taken by adults and children alike. Follow these easy instructions and you may expect to experience beneficial results in as little as three days after starting on a twice daily plan.

Glycerin based herbs tend to be sweet and are usually pleasant to the taste

Alcohol based herbs are stronger and slightly bitter/tart tasting.

1. All herbal extracts are strained thoroughly, but tiny particles remain in the extracted fluid and tend to settle at the bottom and must therefore be shaken before each use.
2. Most herbs can be taken in amounts of 10-15 drops twice daily
3. All herbs can be taken in a single glass with water, juice or tea added in desired amount before drinking
4. Best results will be achieved when taken with food, breakfast and dinner are suggested
5. Do not take herbs before bed (unless using hops or sleep deeper, or other wise instructed) as they tend to be stimulating and may keep you awake
6. B-Complex vitamins are suggested in amounts of 30 drops twice daily, taken along with food, and can be taken in higher amounts in the event of stress or acidity. B vitamins are water soluble and excess is usually easily eliminated
7. In urgent or critical illness herbs may be taken hourly


[Home](#)
[About Us](#)
[Product List](#)
[Service List](#)
[Project List](#)
[Related Links](#)
[Product List](#)
[Product List](#)
[How To Take Herbs](#)

Dissolving Stones with Tea

Dissolving Stones in the Kidneys, Gall Bladder, and Biliary ducts

Stones in the kidneys are formed from uric acid excess, mucous, and may be combined with calcium from the blood fluids collecting in organs and ducts forming calcified stones (usually present from synthetic or in-organic calcium supplements, bovine milk, and poor quality salt), which cause symptoms of gout, leg and feet swelling, and pain and tenderness in the skin and tendons. Kidney stones can be dissolved in under three weeks but will form new ones in three days if you are drinking green or black tea, carbonated sodas, refined sugar cocoa drinks, bovine milk, and phosphated beverages, or taking supplemental in-organic calcium.

Stones in the gall bladder are formed from slimy, mucous plaque-infused liver bile causing bacterial infections, especially in the lungs and bronchia, poor digestion, and higher cholesterol levels in the blood. Stone formation in the biliary ducts is often from parasites in the liver making very small pea green stones (usually up to 2,000 per year) that will float on the surface of toilet water when eliminated and may have been the cause of allergies, hives, and skin rashes.

Many of these stones do not show up in conventional tests because they do not contain enough calcification, but their presence can be identified by symptoms. Not too long ago stone formation existence was more prevalent in elderly people, but due to the poor dietary conditions, excess cow dairy, refined salt, soda consumption, and poor quality water, they are starting in the very young today; stones are even found in infants and small children. Rather than costly, painful, and invasive procedures it is simple to rid oneself of stones with a parasite ridding program and with the additional use of teas from one of two single herbs:

Stinging Nettles or Dandelion Root.

Making teas of nettles or dandelion root will dissolve stones wherever they reside in the body. Here are the approximate time tables:

For kidney stones – 5 cups of tea daily for 14 to 20 days.

For gall bladder stones – 4 cups of tea daily for 18-21 days.

For bile duct or biliary stones – 6 cups of tea daily for 18-21 days (also using parasite remedy)

Eat 2 medium sized red skinned potatoes in their raw state for 2 days following the end of tea therapy by slicing them into 1/8 inch slices on a plate, sprinkling with Real Salt, and then eat like potato chips to rebalance the pH of the intestines and colon, along with ½ cup goat yogurt (with fruit if desired).

A fast but rather aggressive method of eliminating stones is to eat no foods and drink nothing but Nettle leaf or Dandelion root tea for 3 days, ¾ of a gallon of water to three rounded tablespoons of nettles (made by infusion method) or dandelion root (made by

nothing but Nettle leaf or Dandelion root tea for 5 days, $\frac{3}{4}$ of a gallon of water to three rounded tablespoons of nettles (made by infusion method) or dandelion root (made by decoction method), daily with 8-9 glasses of water for flushing. Be prepared for this method to cause gas, very acidic urine (which is why you will need plentiful water), and your colon waste to float in toilet bowl.

Making the tea:

- Stinging nettles is made as an infusion tea, using the tender leaves: bring water to a boil, remove from heat, add dried herb (1 teaspoon per cup of water), cover tightly and steep for 15 minutes. Strain and drink.

Dandelion root is made as a decoction tea, boiling the root (1 teaspoon dried herb per cup of water) for 15 minutes and steeping for 15-30 minutes, all the while tightly covered, then strain and drink.

One full day's worth of tea can be made in the morning and drunk throughout the day. Adding the dandelion leaves to the root tea will make the flavor a little milder without diluting the roots properties. Do not use *just* the leaves; their properties alone are too weak. If adding dandelion leaf to the root, it can be made as an infusion; pour boiling water over tea and cover for 5-15 minutes, then added to tea of dandelion root decoction.



Parasite Remedies

Why is it that cancer and other viral dis-easements are on the rise? It is because we have accepted the presence of too many sub-standard conditions in our body that host anti-body travel and activity. Thanks to Dr. Hulda Regehr Clark Ph.D., N.D. and her research she has determined that every case of critical virus, including those called cancer, AIDS, endometriosis, diabetes, seizures, migraines, Hodgkin's, etc. have the presence of intestinal parasitic flukes, or flat worms, that have left the small intestines through lesions in their walls and traveled through blood fluids causing cellular mutation in the liver, thymus, kidneys, uterus, lungs, and so forth. With the presence of propyl alcohol in the body the liver is unable to trap and kill the tiny eggs of these flukes where they make their home. Here each egg produces 40 *rediae* and begins to reproduce themselves by the thousands and are swept along in the blood taking hold in places of weakness; breast, lung, prostate, etc. Remember that it is the presence of propyl alcohol (rubbing alcohol, cleaning products, etc.) and other toxins in your body that hosts these parasites' development outside of the intestine. Now these *rediae* sprout tails and swim all over in your tissues devouring vital body fluids. The development of this fiendish monster is called ortho-phospho-tyrosine and growth factors make its cells divide, and your cells begin to divide too. Medical science calls this cell division cancer. If you do NOT act quickly and kill this parasite-spawning machine it will take over your body. Regardless of whether this parasitic presence is new or has a long standing foothold, progressing to full strength, a de-parasiting program will rid these flukes and their eggs from your body, starting in 24 hours.

Getting rid of these and other parasites would be absolutely impossible using clinical medicines that can kill only one or two parasites each. Such medicines also tend to make you very ill. Yet the following three herbs rid you of most types of parasites, with little or no headache or nausea, and without any interference with any drug you may already be taking. Other parasites that cause dis-easement are hosted by the presence of heavy metals, such as mercury and barium, or arsenic from in-organic sodium chloride, or radon, from irradiated or microwaved foods, or common pesticides or PCB's. Use a good liver and/or colon cleanse to remove these toxic build-ups.

The three stage process to eliminate parasites goes as follows:

The three stage process to eliminate parasites goes as follows:

1. Kill the parasites and all its stages and eggs.
2. Stop letting propyl alcohol and other poisons into your body.
3. Flush out metals and common toxins from your body.

Killing parasites, their stages of development, and their eggs are accomplished with black walnut hulls (tincture) in their green state (from the black walnut tree), wormwood (from the *Artemisia absinthium* shrub), and common cloves (from the clove tree). These three herbs must be used together as black walnut and wormwood kill the adult and developmental states of parasites and cloves kills their eggs. You will need 1 to 6 ounces of black walnut hull, extracted in grain alcohol, taking 1 teaspoon up to 2 tablespoons daily for 4-10 weeks. Wormwood capsules to kill cancer causing parasites, taking 4-7 daily for 4-10 weeks. Cloves in 00 capsule size, taking 4-7 daily for 4-10 weeks. These are the only essential items needed.

To keep from having headaches during this procedure add ornithine and arginine amino acids which serve to reduce the amount of ammonia (parasite urine) that is toxic to the body, especially the brain, available in the Amino Acid Complex formula, from Peak Frequency Plant Therapy, taking 30 drop twice daily for the first two weeks of the parasite ridding program.

Natives and indigenous peoples have known for years that the human body is susceptible to parasitic invasion and have taken steps to remove them on a regular basis with purges and flushes. Those on this continent have used sulphur and molasses and raw onion to cause a dreadful purge, which is very hard on the body but produce good result for a few parasites. It's a good idea to perform the three herb program on an annual basis for good housecleaning health and to get rid of and prevent eczema due to roundworms, seizures caused by single roundworm, asthma, caused by *Ascaris* in the lungs, diabetes caused by pancreatic fluke from cattle, *Eurylrema*, migraines due to threadworm, *Strongyloides*, acne rosacea from *Leishmania* presence, heart disease caused by dog heartworm, *Dirofilaria*, etc.

It only takes 5 days on these three herbs to kill the intestinal fluke adults in all their stages and their eggs, continuing through to peak at three weeks, followed by a fairly high dose for another two months in order to rid your body of most other parasites. This remedy does NOT kill tapeworm scolex (head tapeworm) and tapeworm cysticercoids (cysts), but will help remove the environs that host their presence. It is suggested that following a good Peak Frequency Food (see www.raphaelology.edu) and herbal plan will keep the body in a resistant state to further host antibodies within your own body.

Dr. Hulda Clark in her book [The Cure for All Diseases](#) recognizes that each and every parasite, bacteria, virus, fungus and toxin has a frequency, which can not only be identified, but eliminated with a matching electronic frequency generated by simple technology. In her book she gives schematics, step by step instructions, parts locations and availability, and frequency band widths for you to build your own frequency generator "zapper" and use it to kill harmful antibodies within your own body safely and effectively, thus eliminating deadly dis-ease.

Please remember that getting rid of the cause of the dis-ease, even by natural and non-invasive means, is still only a temporary curative effect. It is up to you to learn and practice lifestyle choices that continuously foster your immune system to recognize and destroy invaders of any nature, keeping them from taking up residence in your body.

Black Salve

(Please see warning below)

This is an ancient medicine made from acres of field herbs, laboriously concentrated down to mere pounds of blackened salve. It is a very acidic, balanced vitamin and mineral salve, with a

mere pounds of blackened salve. It is a very acidic, balanced vitamin and mineral salve, with a very potent zinc base and has been used to dissolve most viral kinds of abnormal internal growths (does not work well with hormone dependent cancers [breast, uterus, ovarian, etc]), and has been known to dissolve most topical abnormal growths (tumors, warts, moles, etc.) when used as directed, and is credited with relieving many kinds of chronic fatigue illnesses.

Make sure your full intent and focus is to rid your body of any and all abnormal growths, and keep a positive and enthusiastic attitude during what may be a trying process. Your body loves to serve your needs, make sure to give it instructions on what you want it to accomplish for you. Your will power is the most healing force there is.

Internal Use

Use a non-metal utensil to lift out enough black salve to make a ball less than half the size of a dried pea. Make sure you know how big a pea is, even if you need to get one! Another "eyeball" method of sizing is that of a "match head". Take this very small dose and stir it into a *small* glass of water, or pack salve into an empty #4 gel-capsule, or wrap small amount in a piece of bread. Take AFTER meal is eaten. Do not make capsules ahead of time as salve will melt the capsule. Make sure you take herb on a full stomach, after you eat, as the acidity may cause mild to severe nausea, and stomach or headache. Some people may experience slight to moderate blood pressure elevation. In severe or critical case use, this process may be thought of as the herbal chemotherapy.

This herb can be taken once daily for 20 days, then repeated with a five day break in between, or as directed by your health care provider. If resolution has not been made after two full 20 day therapies, seek other remedies.

Make sure to take a break between doses of Indian herb, filling space with lots of vitamins and minerals.

Topical Use, 2 applications in 24 hours

Thoroughly clean and then cover abnormal topical skin growth with enough black salve to ONLY cover growth, being CAREFUL not to get any of the black salve on viable, healthy tissue. Cover salve with bandage and leave on for 8 hours. After 8 hours, remove cover and wash salve off skin growth. Apply beeswax based ointment (such as Peak Frequency Plant Therapy's *Aloe Beeswax Cream*, or Burt's Bees *Hand Salve*, or in a pinch use petroleum jelly) over growth and cover with new bandage.

Repeat application of salve (after cleaning the growth site) for a second time, 24 hours later, for another 8 hours. After second application, keep site covered with beeswax based ointment and bandage at all times for 21 days, changing bandage daily, showering and bathing as usual. Site will burn as dying tissues is ejected, swell to twice normal size, turn red, and form a white field around the site during the 21 days. Streaks may form that look like blood poisoning, do not be alarmed, this is normal. Do not pick or pull at loose tissue. It will come off by itself, intact with the core of the virus. If a hole is formed at the site, the body will fill it in with new tissue. After 21 days the use of lavender essential oil will speed healing, reduce site trauma, and help fill in skin. If first two applications fail to remove entire growth another 2 applications is suggested.

Storage: Store tightly covered in a dark cool place, NOT in the refrigerator. If it should dry out, reconstitute with a little water.

WARNING: This herbal remedy is NOT to be taken during pregnancy, and is NOT to be used for prolonged periods of time. Do NOT take this herb if on chemotherapy, or if taking pain killing drugs. Do NOT take alcohol while using the black salve.



[Home](#) | [About Us](#) | [Product List](#) | [Service List](#) | [Project List](#) | [Related Links](#) | [Product List](#) | [Product List](#) | [Employee Detail](#)