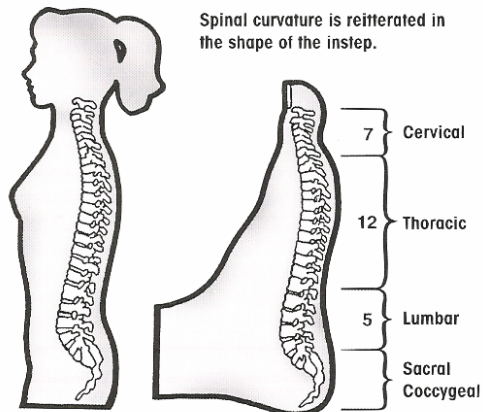
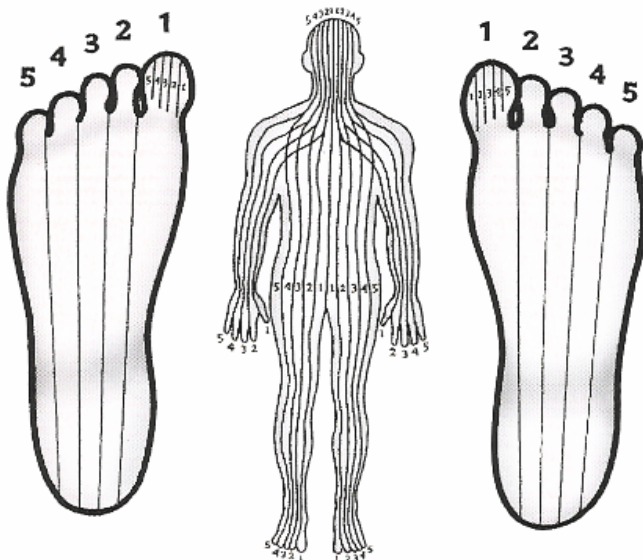


RAPHAOLOGY

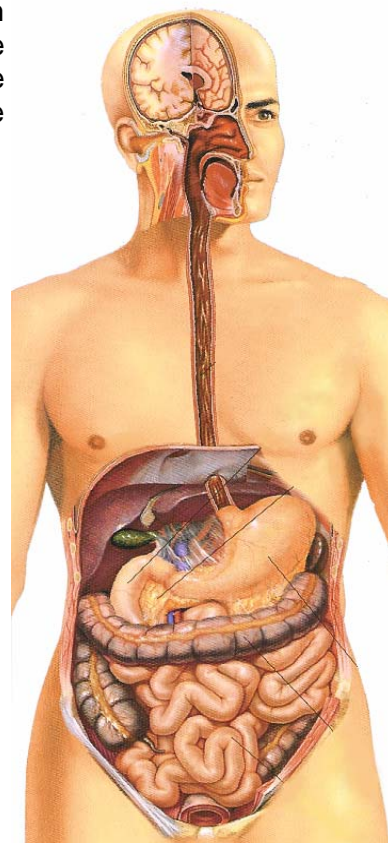
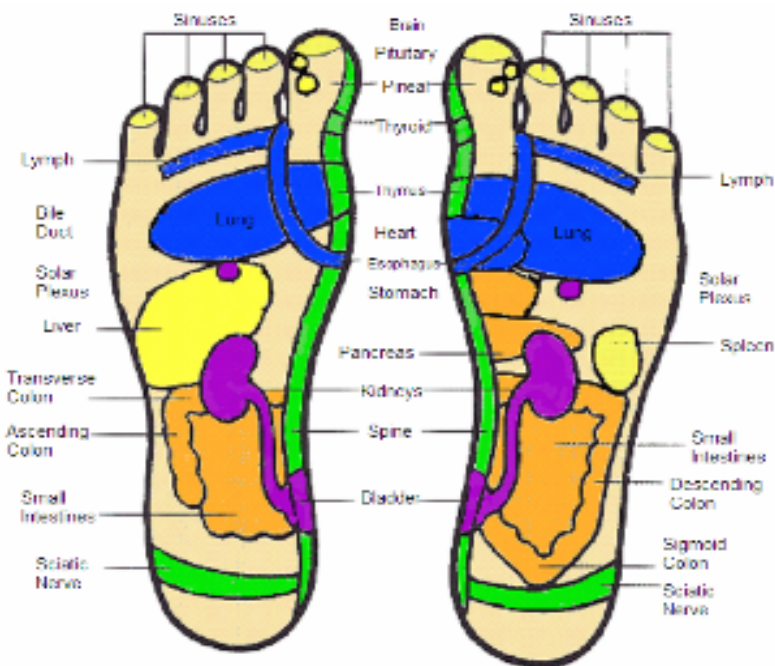
Interactive Diagnostic Therapy

The bottoms of the feet are a map for the entire body. The right foot corresponds to the organs on the right side of the body, and the same holds true for the left foot.



Every aspect of the human body's form is repeated in the shape of the foot. The curvature of the spine is repeated in the curve or arch of the foot. A long neck is repeated in long toes, and so forth. The ears, the eyes, the hands and every other individual part of the body also represent the body as a whole unit.

Along each nerve path is connected one specific organ or system function of the internal workings of the body. Individual pressure points on the foot are used as reactive areas to communicate with every organ and body part as they are attached to the nerve pathways that surface on the skin.



Nerve path endings on the soles of the feet represent a map for the corresponding internal organs of the body, and can be accessed by using Interactive Determination (ID) Therapy. ID therapy will show just what imbalances, dysfunctions, and light frequency deficiencies are present, and exactly what color frequency in herbs and foods are necessary to restore full spectrum light, energy, nutrients, and enzymes to the individual organ for repairing damage, restoring function, boosting immunities, balancing hormones, alleviating symptoms, and revitalizing health to its peak frequency state.